

Full Length Research Paper

## Comparative analysis of regulatory elements in different germin-like protein gene promoters

Tariq Mahmood<sup>1\*</sup>, Nazia Nazar<sup>1</sup>, Tayyaba Yasmin<sup>2</sup>, Bilal Haider Abbasi<sup>3</sup>, Mushtaq Ahmad<sup>1</sup> and Syed Muhammad Saqlan Naqvi<sup>4</sup>

<sup>1</sup>Department of Plant Sciences, Quaid-i-Azam University, 45320-Islamabad, Pakistan.

<sup>2</sup>Department of Biosciences, COMSATS Institute of Information Technology, Islamabad, Pakistan.

<sup>3</sup>Department of Biotechnology, Quaid-i-Azam University, 45320-Islamabad, Pakistan.

<sup>4</sup>Department of Biochemistry, University of Arid Agriculture Rawalpindi, Pakistan.

Accepted 10 March, 2010

Germin and germin-like proteins (GLPs) the members of cupin superfamily of proteins, which are functionally most diverse proteins. Germin and GLPs have some unique features as they are highly resistant to proteases and to degradation by heat, high pH and detergents like Sodium dodecyl Sulphate (SDS). They are water soluble extracellular enzymatic protein that may also have Oxalate Oxidase (OxO), Superoxide dismutase (SOD) or ADP-glucose pyrophosphate or phosphodiesterase (AGPPase) activities. At the moment seven GLP gene promoter from different organisms have been studied and published. These all promoter sequences have been analyzed in this study. It was observed that these promoters have important regulatory elements, which are involved in various important functions. These elements have been compared on the basis of location, copy number, and distributed on positive and negative strands. It was also observed that some of these elements are common and remained conserved among all GLP promoters during evolution. Such regulatory elements are commonly observed in seed storage proteins, dehydration in response to light, senescence observed on exposure to dark and in elements specific for expression in pollen. Moreover, these common elements are reported to be expressed under environmental stresses (salt and pathogen attack) and to growth regulators.

**Key words:** Germin-like protein gene, regulatory elements mapping, promoter.

### INTRODUCTION

Germin and germin-like proteins (GLPs) is a member of plant protein family, highly resistant to proteases and inactivation by agents like heat, SDS and extreme pH. GLPs are ubiquitous plant proteins found in plant kingdom, that is, they have been reported from monocotyledonous and dicotyledonous Angiosperms, Gymnosperms and also from bryophytes and algae (Dunwell, 1998, 2008). Despite considerable sequence variation (< 20% similarity), germinals and GLPs share key amino acid residues thereby sharing a common structure (Dunwell, 1998, Dunwell et al., 2000, 2001, 2008). Despite functional diversity, their structure is found to be similar to the

members of cupin superfamily like isomerases, cyclases, dioxygenases, sugar or auxin-binding proteins as well as monomeric or dimeric globulin seed storage proteins, such as phaseolin (Dunwell et al., 2000). Some GLPs have been reported to possess superoxide dismutase (SOD) or phosphodiesterase activity (Bernier and Berna, 2001) that is in addition to their obvious oxalate oxidase activity (Caliskan, 2000), which suggests the involvement of germinals/GLPs in apoplastic detoxification. OxO acts on oxalic acid secreted by phytopathogens like *Sclerotinia sclerotiorum* whereas SOD acts as free radical scavenger and in either reaction H<sub>2</sub>O<sub>2</sub> is produced. Moreover, in non-enzymatic biochemical activities, GLPs are found to be involved for example their role as auxin-binding proteins in peach or serine protease inhibitors in wheat (Segarra et al., 2003).

\*Corresponding author. E-mail: [tmahmood@qau.edu.pk](mailto:tmahmood@qau.edu.pk).

Germins and GLPs are neither restricted to cereal only nor are expressed specifically during germination and are often expressed during the early growth stages in wheat embryos due to which it was termed “germin” (Thompson and Lane 1980). Germin and GLPs are expressed at different stages of development. A GLP gene from *Zea mays* (*ZmGLP1*) was reported from green tissue of the plant (Fan et al., 2005) whose transcript was observed in higher quantities in young leaf tissue than in mature leaves (Fan et al., 2005). Further, GLPs have also been reported from cassava roots during a study at proteomic levels (Sheffield et al., 2006).

It had already been established that germins and GLPs are expressed under stress whether biotic or abiotic. The role of germins and GLPs in plant defense had been studied in *Capsicum annuum* L. cv. Bugang that showed hypersensitive response (HR) when infected with Tobacco mosaic virus pathotype P0 (TMV-P<sub>0</sub>) (Park et al., 2004). The performance of a native herbivore of *Nicotiana attenuata* was found to be enhanced by silencing the germin-like gene (Lou and Baldwin, 2006). The recovery of GLPs from *Beta vulgaris* seedlings germinated under stress support their probable role during stress (De Los Reyes and McGrath, 2003).

In present study, we have compared different GLP promoters on the basis of presence, number and location of regulatory elements. Earlier, two GLP promoter regions have been amplified, cloned, sequenced and analyzed and the findings have been reported as well (Mahmood et al., 2007; Yasmin et al., 2008).

## MATERIAL AND METHOD

### Isolation of GLP promoter regions

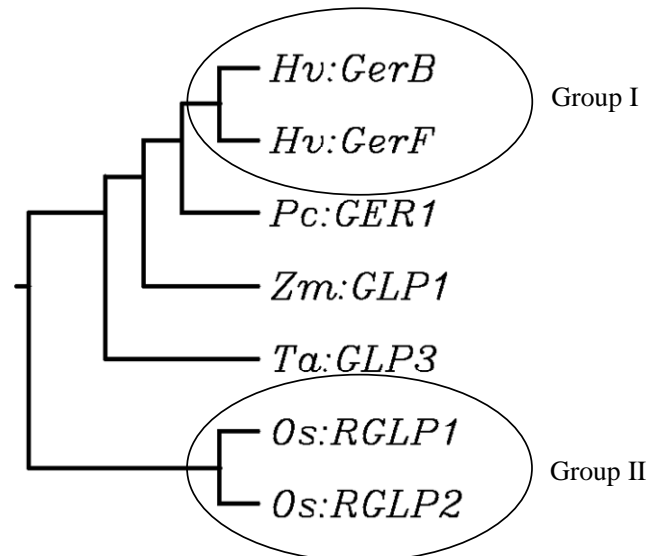
The sequences of seven different GLP gene promoters *Hv* GerB (Accession No.DQ324801.1), *Hv* GerF (Accession No. DQ324800.1), *Zm* GLP1 (Accession No.AY394010.1), *Pc* GER1 (Accession No.AY077704.1), *Ta* GLP3 (Accession No. AY864922.1) and *Os* RGLP1 EU742684 were taken from Genbank. The size of all the promoters was purposely reduced to 1000 bp for uniformity.

### Multiple Alignment of the Sequence

All the sequences were analyzed for checking the homology among the promoter and phylogenetic tree was constructed by using online available program Clustal W (<http://align.genome.jp>).

### Regulatory Element Analysis of GLP Promoters

The analysis of regulatory elements of various GLP promoters was done using web based program PLACE/Signal Scan ([www.dna.affrc.go.jp](http://www.dna.affrc.go.jp)) (Higo et al., 1999) and their functional importance was investigated from previously reported literature. Identified regulatory elements were compared with each other on the basis of presence or absence of a specific regulatory element, their copy number and position. On the basis of information gathered different maps were constructed for analyzing the position, number and location (negative or positive strand).



**Figure 1.** NJ tree showing similarities among seven GLP gene promoters.

## RESULTS AND DISCUSSION

### Isolation of GLP promoters

All GLP promoters from published data were picked up including two promoters from rice reported by our group (Mahmood et al., 2007, Yasmin et al., 2008). In total, seven different GLP promoter sequences were managed from data bases and for comparative analysis of these promoter sequences all the sequences were reduced to a constant length that is, 1000 bp.

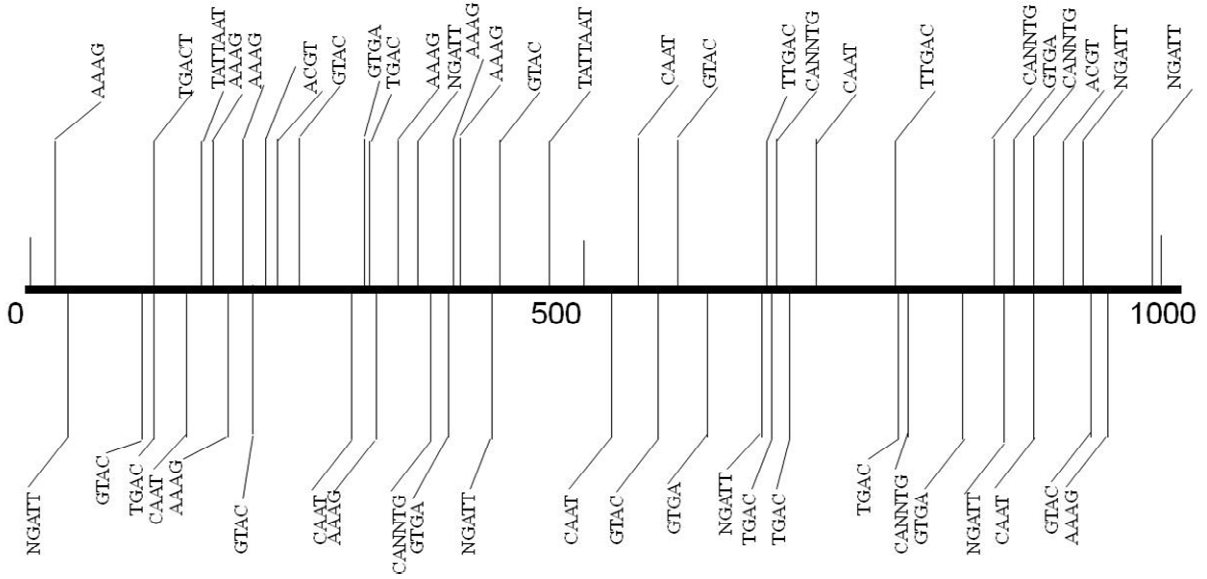
### Alignment of different GLP promoters

Clustal W is a general tool used for multiple alignments of DNA sequences. Seven different GLP promoter sequences were analyzed by Clustal W (<http://align.genome.jp>) and Neighbor Joining (NJ) tree was constructed (Figure 1). It was observed that Group I had 5 promoters *Hv* Ger B, *Hv* GerF, *Pc*, GER1, *Zm* GLP1 and *Ta* GLP3 in NJ tree. In this group only *Hv* Ger B, *Hv* GerF have shown similar kind of closeness as Group II promoters *Os* RGLP1 and *Os* RGLP2 (Figure 1), however, their homology was 69% while in *Os* RGLP1 and *Os* RGLP2 promoters, it was 21%. The remaining all promoters were observed to have close links with group I.

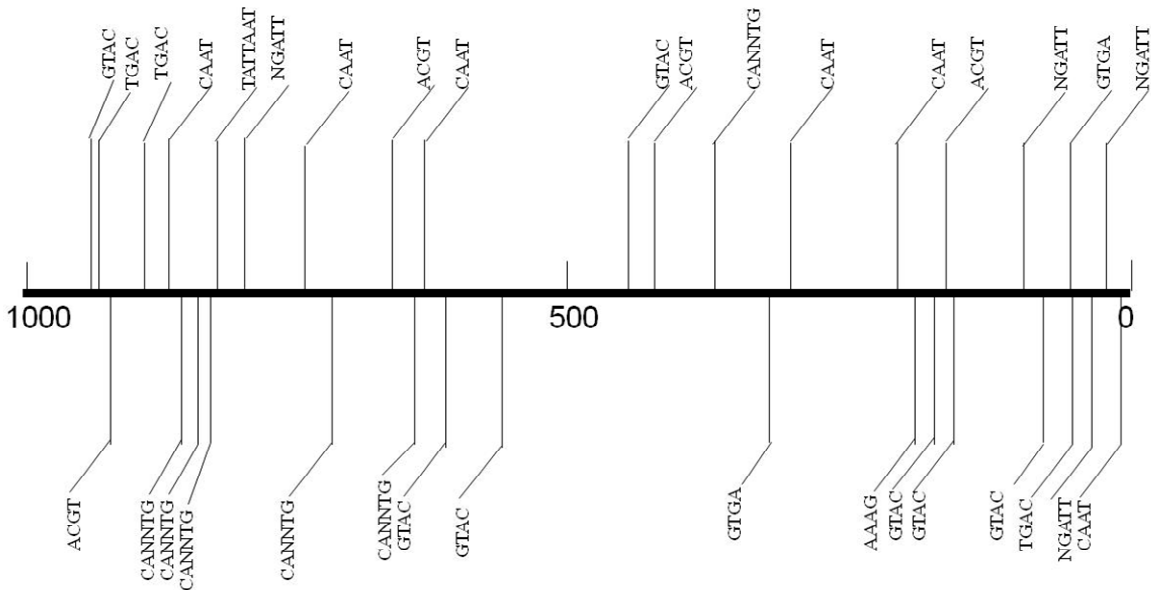
### Identification/screening of regulatory elements

Different regulatory elements screened out with the help of “PLACE/Signal Scan”, an online available tool (Higo et al., 1999) ([www.dna.affrc.go.jp](http://www.dna.affrc.go.jp)). All the sequences were found to contain a large number of *cis*-acting





**Figure 3a.** Location of different common regulatory elements on positive strand of OsRGLP1 promoter region.



**Figure 3b.** Location of different common regulatory elements on negative strand of OsRGLP1 promoter region.

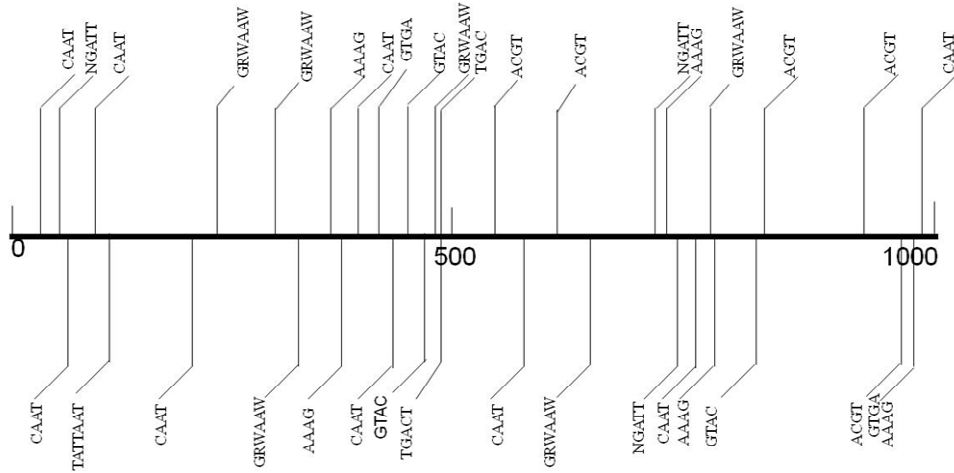
Scan program and was observed to be involved in the expression of various important genes. The details of the common important factors are as follows.

DNA binding with one finger transcriptional factors (Dof): AAAG is particularly required for binding of Dof proteins and in this comparative study *Ta* GLP3 has highest copy number (18) and had random distribution on positive negative strands (Figures 8a and 8b). The role of Dof factors had been reported during expression of genes responsible for photosynthesis, seed storage and also for the gene stimulated by plant hormones and

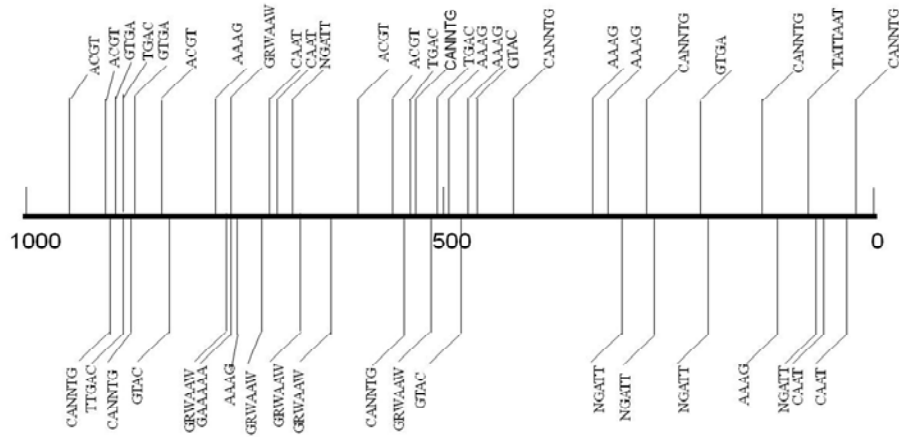
stress signals (Yanagisawa 1999; Zhang et al., 1995; De Paolis et al. 1996; Vicente-Carvajosa et al., 1997; Kisu et al., 1998; Mena et al., 1998; Yanagisawa and Sheen 1998; Baumann et al., 1999).

**ARR1**

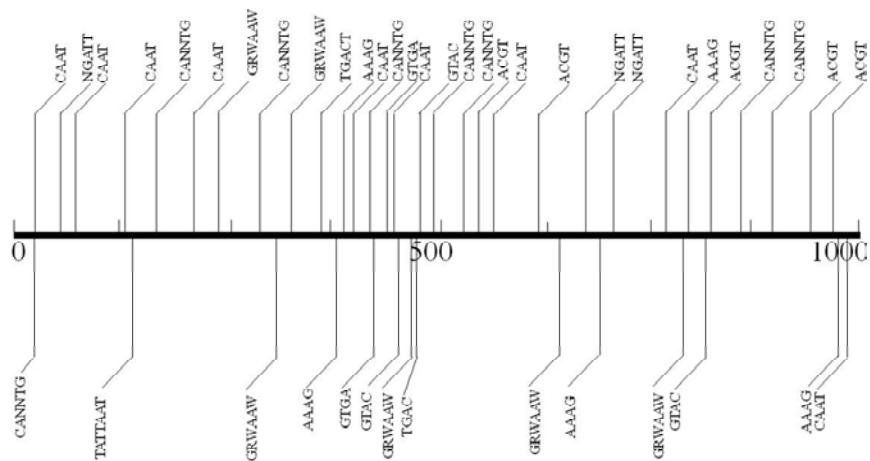
ARR1 belongs to type-B Arabidopsis response regulators (ARRs) and are responsible for early responses to cytokinins, which made possible by the combined efforts



**Figure 4a.** Position of different common regulatory elements on positive strand of *Hv* GerB promoter region.



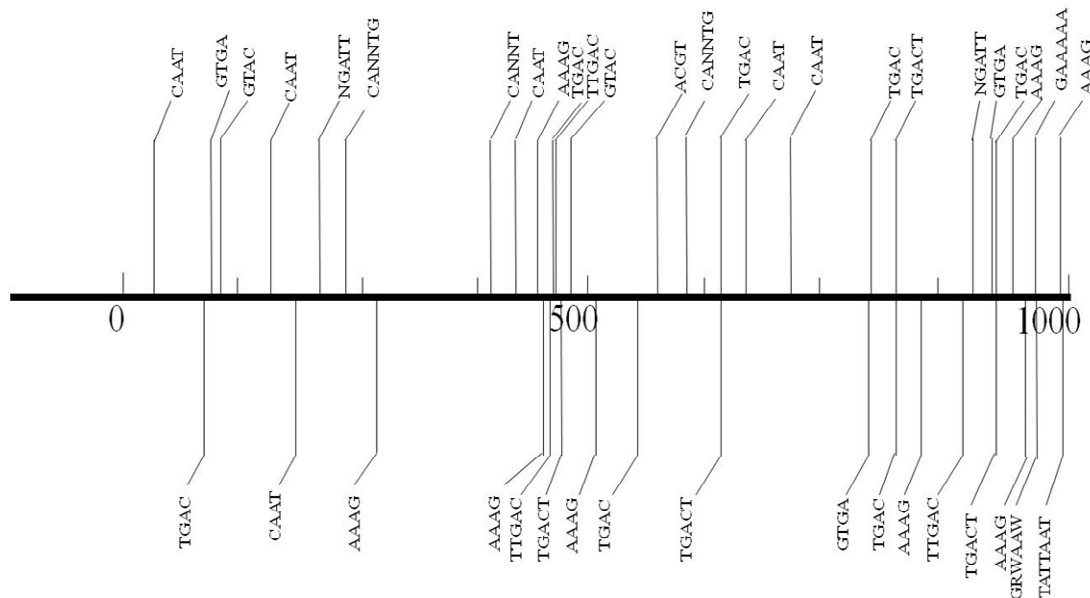
**Figure 4b.** Position of different common regulatory elements on negative strand of *Hv* GerB promoter region.



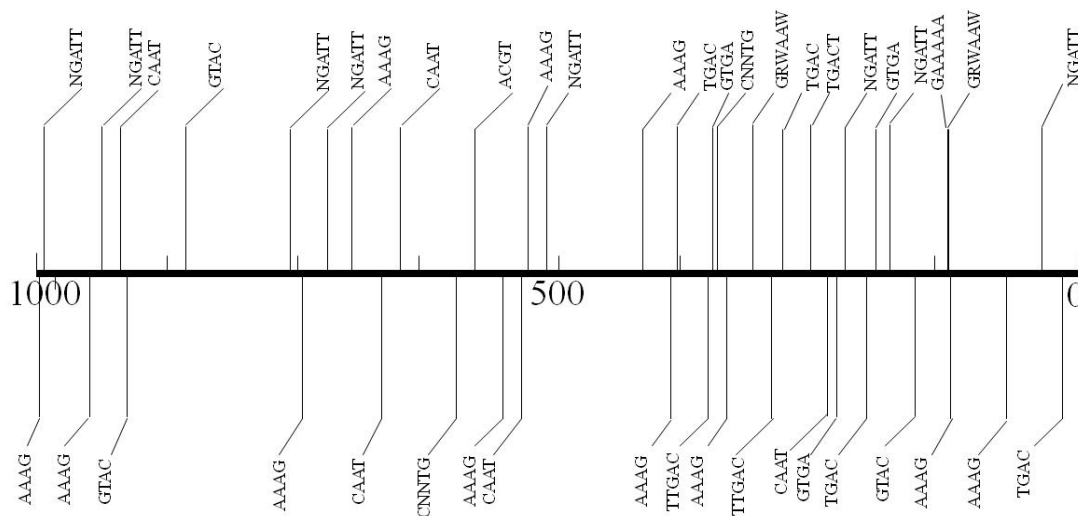
**Figure 5a.** Position of different common regulatory elements on positive strand of *Hv* GerF promoter region.







**Figure 8a.** Position of different common regulatory elements on positive strand of *Ta* GLP3 promoter region.



**Figure 8b.** Position of different common regulatory elements on negative strand of *Ta* GLP3 promoter region.

reported as enhancer for initiation of salicylic acid when tissue is injured and bacterial infection in *Brassica oleracea*. OsRGLP2 gene promoter has 14 copies of TGAC and heights in all (Figures 2a and 2b).

The TGAC element involved in gibberellin signaling pathway, was first reported from *Oryza sativa* (Eulgem et al., 1999). The specific binding of WRKY proteins from parsley was observed at TGAC-containing W box elements within the Pathogenesis-Related genes (Zhang et al., 2004). The TTTGAC/TTGACC element, component of W box is found to be involved in pathogen related gene expression in Parsley (Rushton et al., 1996). This

element has been reported in eleven copies from gene promoter *Ta* GLP3, which is the highest in this particular comparative study (Figures 8a and 8b).

### GT elements

GT elements are involved in cell type-specific transcriptional regulation. Initial reports favor the presence of GT-1 *cis*-elements in pea. It was further studies that when stresses like pathogen or salt is applied to the plant tissue, the genes with upstream GT element are



expressed robustly (Snedden and Fromm 1998, 2001). The obvious role of these elements in activation or repression of different photosynthesis related genes under light and dark conditions is notable. In this comparative study there are three sites having GT elements GT1CONSENSUS, GT1GMSCAM4 and GTGANTG10. GRWAAW is Consensus GT-1 binding site in many light-regulated genes (Terzaghi and Cashmore 1995). GAAAAA having "GT-1 motif" was reported from soybean (*Glycine max*) CaM isoform, SCaM-4 that is found to be involved in pathogen- and salt-induced SCaM-4 gene expression. *Hv* GerB has 13 numbers of copies. Further, "GTGA motif" from promoter region of tobacco late pollen gene *g10* has also been reported.

### ACGT Sequence

The role of ACGT under water stress and senescence has been repeatedly described and its contribution in the expression of *erd1* (early responsive to dehydration *Arabidopsis*) during etiolation is clear (Simpson et al., 2003). It was observed that *Hv* GerF has 10 copies of AGCT.

### Conclusion

This comparative study of different GLP genes promoter sequences revealed that all seven GLP promoters have a wide range of *cis*-acting elements, while some of them are common. Moreover, it was observed that these elements have diversified functions and have different number of copies at different locations (negative and positive strand).

### ACKNOWLEDGEMENT

We are thankful to the Higher Education Commission, Islamabad for providing the financial support for this research work through project number 1113 of "National Research Program for Universities".

### REFERENCES

- Baumann K, De Paolis A, Costantino P, Gualberti G (1999). The DNA binding site of the Dof protein *NtBBF1* is essential for tissue-specific and auxin-regulated expression of the *rolB* oncogene in plants. *Plant Cell*. 11: 323-333.
- Bernier F, Berna A (2001). Germin and germin-like proteins (GLPs): plant do-all proteins, but what do they do exactly? *Plant Physiol*. Biochem. 39: 545-554.
- De Los Reyes BG, McGrath JM (2003). Cultivar specific seedling vigor and expression of a putative oxalate oxidase germin-like protein in sugar beet (*Beta vulgaris* L.). *Theor. Appl. Genet*. 107: 54-61.
- De Paolis A, Sabatini S, de Pascalis L, Costantino P, Capone I (1996). A *rolB* regulatory factor belongs to a new class of single zinc finger plant proteins. *Plant J*. 10: 215-223.
- Dunwell JM (1998). Cupins: A new superfamily of functionally diverse proteins that include germins and plant storage proteins. *Biotechnol. Genet. Eng. Rev*. 15: 1-32.
- Dunwell JM, Culham A, Carter CE, Sosa-Aguirre CR, Goodenough PW (2001). Evolution of functional diversity in the cupin superfamily. *Trends Biochem. Sci*. 26: 740-746.
- Dunwell JM, Gibbing JG, Mahmood T, Naqvi S (2008). Germin and germin-like proteins: evolution, structure and function. *Crit. Rev. Plant Sci*. 27: 342-375.
- Dunwell JM, Khuri S, Gane P (2000). Microbial relatives of the seed storage proteins of higher plants: Conservation of structure and diversification of function during evolution of the cupin super-family. *Microbiol. Mol. Biol. Rev*. 64: 153-179.
- Eulgem T, Rushton PJ, Schmelzer E, Hahlbrock K, Somssich IE (1999). Early nuclear events in plant defense signaling: rapid gene activation by WRKY transcription factors. *EMBO J*. 18: 4689-4699.
- Eulgem T, Rushton PJ, Robatzek S, Somssich IE (2000). The WRKY superfamily of plant transcription factors. *Trends Plant Sci*. 5: 199-206.
- Fan Z, Gu H, Song H, Wang Q, Liu M, Qu LJ, Chen Z (2005). Cloning and expression analysis of *Zmglp1*, a new germin like protein gene in maize. *Biochem. Biophys. Res. Commun*. 331: 1257-1263.
- Haberer G, Kieber JJ (2002). Cytokinins. New insights into a classic phytohormone. *Plant Physiol*. 128: 354-362.
- Higo K, Ugawa Y, Iwamoto M, Korenaga T (1999). Plant *cis*-acting regulatory DNA elements (PLACE) database. *Nucleic Acids Res*. 27(1): 297-300.
- Imamura A, Hanaki N, Nakamura A, Suzuki T, Taniguchi Kiba MT, Ueguchi C, Sugiyama T, Mizuno T (1999). Compilation and characterization of *Arabidopsis thaliana* response regulators implicated in His-Asp phosphorelay signal transduction. *Plant Cell Physiol*. 40: 733-742.
- Kisu Y, Ono T, Shimofurutani N, Suzuki M, Esaka M (1998). Characterization and expression of a new class of zinc finger protein that binds to silencer region of ascorbate oxidase gene. *Plant Cell Physiol*. 39: 1054-1064.
- Lou Y, Balwin IT (2006). Silencing of a Germin-like gene in *Nicotiana attenuate* improves performance of native Herbivores. *Plant Physiol*. 140: 1126-1136.
- Mahmood T, Hyder MZ, Naqvi SMS (2007). Cloning and sequence analysis of germin-like protein gene 2 promoter from *Oryza sativa* L. ssp. *Indica*. *DNA Sequence*, 18(1): 26-32.
- Mena M, Vicente-Carbajisa J, Schmidt RJ, Carbonero P (1998). An endosperm-specific Dof protein from barley, highly conserved in wheat, binds to and activates transcription from the prolamins box of a native b-hordein promoter in barley endosperm. *Plant J*. 16: 53-62.
- Park HC, Kim ML, Kang YH, Jeon JM, Yoo JH, Kim MC, Park CY, Jeong JC, Moon BC, Lee JH, Yoon HW, Lee SH, Chung WS, Lim CO, Lee SY, Hong JC, Cho MJ (2004). Pathogen and NaCl-induced expression of the SCaM-4 promoter is mediated in part by a GT-1 box that interacts with a GT-1-like transcription factor. *Plant Physiol*. 135: 2150-2161.
- Rushton PJ, Torres JT, Parniske M, Wernet P, Hahlbrock K, Somssich IE (1996). Interaction of elicitor-induced DNA-binding proteins with elicitor response elements in the promoters of *Parsely* PR1 gene. *EMBO J*. 15: 5690-5700.
- Sakai H, Aoyama T, Oka A (2001). *Arabidopsis* ARR1 and ARR2 response regulators operate as transcriptional activators. *Plant J*. 24: 703-711.
- Segarra CI, Casalongue CA, Pinedo ML, Ronchi VP, Cande RD (2003). A germin-like protein of wheat leaf apoplast inhibits serine proteases. *J. Exp. Bot*. 54: 1335-1341.
- Sheffield J, Taylor N, Fauquet C, Chen S (2006). The cassava (*Manihot esculenta* Crantz) root proteome: Protein identification and differential expression. *Proteomics*. 6: 1588-1598.
- Simpson SD, Nakashima K, Narusaka Y, Seki M, Shinozaki K, Yamaguchi-Shinozaki K (2003). Two different novel *cis*-acting elements of *erd1*, a *clpA* homologous *Arabidopsis* gene function in induction by dehydration stress and dark-induced senescence. *Plant J*. 33: 259-270.
- Snedden WA, Fromm H (1998). Calmodulin, calmodulin-related proteins and plant responses to the environment. *Trends Plant Sci*. 3: 299-304.

- Snedden WA, Form H (2001). Calmodulin as a versatile calcium signal transducer in plants. *New Phytol.* 151: 35-66.
- Terzaghi WB, Cashmore AR (1995). Light-regulated transcription. *Plant Mol. Biol.* 46: 445-474.
- Thompson EW, Lane BG (1980). Relation of protein synthesis in imbibing wheat embryos to the cell-free translational capacities of bulk mRNA from dry and imbibing embryos. *J. Biol. Chem.* 255: 5965-5970.
- Vicente-Carbajosa J, Moose SP, Parsons R, Schmidt RJ (1997). A maize zinc-finger protein binds the prolamins box in zein gene promoters and interacts with the basic leucine zipper transcriptional activator Opaque2. *Proc. Natl. Acad. Sci. USA*, 94: 7685-7690.
- Wang Z, Yang P, Fan B, Chen Z (1998). An oligo selection procedure for identification of sequence-specific DNA-binding activities associated with plant defense. *Plant J.* 16: 515-522.
- Yanagisawa S, Sheen J (1998). Involvement of maize DOF Zinc Finger proteins in tissue-specific and light-regulated gene expression. *Plant cell.* 10: 75-89.
- Yanagisawa S, Schmidt RJ (1999). Diversity and similarity among recognition sequences of transcription factors. *Plant J.* 17: 209-214.
- Yasmin T, Mahmood T, Hyder MZ, Akbar S, Naqvi SNS (2008). Cloning, Sequencing and *In Silico* Analysis of Germin like Protein Gene 1 Promoter from *Oryza Sativa* L. ssp Indica. *Pak. J. Bot.* 40(4): 1627-1634.
- Zhang B, Chen W, Foley RC, Buttner M, Singh KB (1995). Interactions between distinct types of DNA binding proteins enhance binding to ocs element promoter sequences. *Plant Cell* 7: 2241-2252.
- Zhang ZL, Xie Z, Zou X, Casaretto J, Ho TH, Shen QJ (2004). A rice WRKY gene encodes a transcriptional repressor of the gibberellin signaling pathway in aleurone cells. *Plant Physiol.* 134: 1500-1513.