

Full Length Research Paper

Analysis of Genetic diversity and relationships in local Tunisian barley by RAPD and SSR analysis

Kadri Karim^{1*}, Abdellawi Rawda², Cheikh-Mhamed Hatem³, Ben-Naceur Mbarek³ and Trifi Mokhtar⁴

¹Laboratoire de Biotechnologie et de culture des Tissus, Centre regional de la Recherche en Agriculture Oasienne, Degach 2260, Tunisie.

²Arid Regions Institute of Medenine, Street Djerba 22.5 Km 4182 Medenine, Tunisia.

³Laboratoire de Biotechnologie et physiologie végétale, Institut National de la Recherche Agronomique de Tunisie, 2049 rue Hédi Karray Ariana, Tunisie.

⁴Département de biologie, faculté des sciences de Tunis, 2092 compus universitaire El Manar II, Tunisie.

Accepted 28 July, 2008

The genetic variation and relationships among 12 local barleys and the varieties Martin and Manel were evaluated using random amplified polymorphic DNA (RAPD) and simple sequence repeat (SSR). A high level of polymorphism was found with both RAPD and SSR markers and the mean polymorphism information content (PIC) values were 0.477 and 0.533 for RAPD and SSR markers, respectively. In RAPD analyses, 69 out of 93 bands (74%) were polymorphic. The number of alleles ranged from 4 to 10 per primer, with an average of 6.2 per primer. The RAPD-based genetic dissimilarity (RAPD-GD) ranged from 0.114 to 0.933, with the mean of 0.523. In SSR analyses, a total of 43 alleles were detected, among which 39 alleles (90.7%) were polymorphic. The number of alleles per primer ranged from 2 to 4 with an average of 2.87 alleles per SSR primer. The SSR-derived genetic dissimilarity (SSR-GD) ranged from 0.423 to 0.910, with the mean of 0.665. SSR was better than RAPD in detecting genetic diversity among the barley accessions. A poor correlation ($r = 0.193$) was found between both sets of genetic similarity data, suggesting that both sets of markers revealed unrelated estimates of genetic relationships.

Key words: Barley, RAPD markers, SSR markers, genetic diversity.

INTRODUCTION

Barley, *Hordeum vulgare* L., is one of the principal cereal crops in the world and is cultivated in all temperate areas (von Bothmer et al., 1995). Wild barleys, *H. vulgare* ssp. *spontaneum* and *H. vulgare* ssp. *agriocrithon*, are the primary gene pool of cultivated barley (*H. vulgare* ssp. *vulgare*). The total number of barley accessions in the Genbanks, including redundant materials, is estimated to be about 280,000 (Plucknett et al., 1987). Barley is a major cereal crop in Tunisia and is of great importance as forage species. It had been the subject of intensive genome mapping and quantitative trait dissection efforts. Barley ranks fourth in the world after rice, wheat and maize (Forster et al., 2000). Local barley is of

Six rows ear and presenting a genome of $2n = 2x = 14$. In Tunisia, since the beginning of the cereal improvement program, we have registered only 15 varieties which make a narrow genetic diversity. On the other hand, we have more than 30 varieties of *durum* and bread wheat officially recorded (El Faleh, 1998).

Genetic barley erosion could be avoided through the establishment of a local genotype resources collection and conservation. Consequently, genetic diversity, identification and maintenance of our local resources should be achieved to be used in breeding programs.

Molecular markers have been proved to be valuable tools in the characterization and evaluation of genetic diversity within and between species and populations. It has been shown that different markers might reveal different classes of variation (Powell et al., 1996; Russell et al., 1997). It is correlated with the genome fraction surveyed by each kind of marker, their distribution

*Corresponding author. E-mail : kadri.karim@iresa.agrinet.tn.
Tel/Fax: + (216) 76 420 085.

Table 1. Accessions' origin, bioclimatic stage and rainfall (Monthly Bulletin of the National Meteorological Institute from 1975 to 2004).

Accession	Origin	Bioclimatic stage	Rainfall (mm)
Tozeur 1	Tozeur	Sahara	150
Tozeur 2	Tozeur	Sahara	150
Kébill 1	Kébilli	Sahara	150
Kébilli 2	Kébilli	Sahara	150
Kébilli 3	Kébilli	Sahara	150
Kasserine	Kasserine	Arid sup	300
Sidi Bouzid	Sidi Bouzid	Arid sup	300
Jendouba 1	Jendouba	Humid inf	800
Jendouba 2	Jendouba	Humid inf	800
Manel	Jendouba	Humid inf	800
Kalaâ	Kalaât El ndalous	Sub-humid	600
Kélibia 1	Kélibia	Sub-humid	600
Kélibia 2	Kélibia	Sub-humid	600
Martin	Introduced from Algeria (1931)		

throughout the genome and the extent of the DNA target which is analyzed by each specific assay (Dávila et al., 1999b). The advent of the polymerase chain reaction (PCR) favored the development of different molecular techniques such as random amplified of polymorphic DNA (RAPD), simple sequence repeats (SSR or microsatellite), sequence tagged sites (STS), random amplified microsatellite polymorphism (RAMP) and inter-simple sequence repeat polymorphic DNA (ISSR), and so on (Saiki et al., 1988; Welsh and McClelland, 1990; Williams et al., 1990; Akkaya et al., 1992; Tragoonrung et al., 1992; Zietkiewicz et al., 1994; Wu et al., 1994; Nagaoka and Ogihara, 1997). These molecular markers had been used in barley for detecting genetic diversity, genotype identification, genetic mapping (Sánchez de la Hoz et al., 1996; Matus and Hayes, 2002; Dávila et al., 1999a, 1999b; Dávila et al., 1998; Tragoonrung et al., 1992; Tanyolac, 2003; Fernández et al., 2002; Struss and Plieske, 1998). Of these techniques, RAPD has several advantages, such as simplicity of use, low cost, and the use of small amount of plant material, etc. RAPDs were proved to be useful as genetic markers in the case of self-pollinating species with a relatively low level of intraspecific polymorphism, such as hexaploid wheat (Devos and Gale, 1992; Joshi and Nguyen, 1993) and cultivated barley (Barua et al., 1993; Chalmers et al., 1993; Tinker et al., 1993). ISSR markers, which involve PCR amplifications of DNA using a primer composed of a microsatellite sequence anchored at 3' or 5' end by 2 - 4 arbitrary, could be used to assess genetic diversity (Qian et al., 2001).

In Tunisia attention is now given to barley molecular study. In fact, Abdellaoui et al. (2007) showed a large diversity of local barley accessions using RAPD markers. Besides, Hamza et al. (2004), working on 31 barley accessions used 15 ISSR markers and showed a PIC

value of 0.53. Also Belgouthi (2007), working on 12 local barley genotypes using 10 SSR markers, showed a PIC value of 0.5.

The objectives of this study are to (1) reveal the SSR-based genetic diversity in a barley germplasm from Tunisia, (2) compare RAPD and SSR diversity in the studied materials, and (3) assess the genetic diversity within the selected accessions of the barley landraces as compared to that in its wild relatives by using RAPD and SSR molecular markers.

MATERIALS AND METHODS

Plant material

Twelve local winter barley accessions (*Hordeum vulgare*, L.) were collected from different Tunisian regions and named according to their origin. In addition, cultivated varieties 'Martin' and 'Manel' were used as a control. These accessions were obtained after prospection carried out in different Tunisian bioclimatic regions (Table 1). Seeds of each accession were sown in pots in three replications. The experiment was carried out at field capacity in the National Agronomic Research Institute of Tunisia (INRAT).

DNA extraction

The DNA was extracted and purified from 100 mg of fresh leaves, using a CTAB (cetyl trimethyl ammonium bromide) method (Webb and Knapp, 1990). DNA was then quantified at 260 nm using a spectrophotometer (standard CECIL CE2501 series 2000/3000): 5 µL DNA samples was diluted in 995 µL of Tris-EDTA (TE) buffer and compared with a control containing 1000 µL of TE. The DNA concentration (C) was calculated as follows: $C (\mu\text{g } \mu\text{L}^{-1}) = D_{0260} \times 10$. D_{0260}/D_{0280} ratio was also calculated to determine DNA purity.

PCR amplification and electrophoresis

A total of fifteen 10-mer oligonucleotides with arbitrary sequence

Table 2. RAPD primers' sequence, number of total band, number of polymorphic bands and polymorphic information content value generated by each primer.

Primer	Primers sequences 5'---- 3'	Number of total bands	Number of polymorphic bands	Polymorphic information content value
OPD02	GGACCCAACC	8	6	0.623
OPD10	GGTCTACACC	6	5	0.525
OPD18	GAGAGCCAAC	4	2	0.111
OPD20	ACCCGGTCAC	9	7	0.821
OPG12	CAGCTCACGA	8	6	0.756
OPG14	GGATGAGACC	5	2	0.312
OPG10	AGGGCCGTCT	8	3	0.501
OPJ10	AAGCCCGAGG	4	2	0.133
OPF03	CCTGATCACC	10	8	0.814
OPH13	GACGCCACAC	9	7	0.854
OPE03	CCAGATGCAC	4	3	0.214
OPE07	AGATGCAGCC	5	3	0.112
OPE12	TTATCGCCCC	8	5	0.554
OPB05	TGCGCCCTTC	7	6	0.514
OPB18	CCACAGCAGT	6	4	0.321
Total		93	69	7.165
Average		6.2	4.6	0.447

from Operon (kits A, B, D, F, H, and J) were used in RAPD analysis (Table 2) and 15 primer pairs were used in SSR analysis (Table 3). The PCR reaction mixture consisted of 20 – 50 ng genomic DNA, 1×PCR buffer, 2.0 mmol/L MgCl₂, 100 μmol/L of each dNTP, 0.1 μmol/L primers and 1U *Taq* polymerase in a 25 μL volume. The amplification protocol was 94°C for 4 min to pre-denature, followed by 45 cycles of 94°C for 1 min, 36°C (for RAPD analysis) or melting temperatures (for SSR analysis) for 1 min and 72°C for 1 min, with a final extension at 72°C for 10 min. Amplification products were fractionated on 1.5% agarose gel, electrophoresis was carried out at a constant voltage of 100 v for 2 h (for RAPD analysis) or 6% denatured polyacrylamide gels and the electrophoresis was conducted at 1200 v and 45°C (for SSR analysis). The DNA bands were visualized according to the slightly modified method of Saker et al. (2005) in 1X TBE buffer containing 0.01% of ethidium bromide for (RAPD) or by silver staining of gels according to Cho et al. (1996).

Data analysis

RAPD and ISSR data were scored for presence (1), absence (0) or as a missing observation (9), and each band was regarded as a locus. Two matrices, one for each marker, were generated. The genetic dissimilarities (GD) were calculated according to Nei and Li (1979). Based on the dissimilarity matrix, a dendrogram showing the genetic relationships between genotypes was constructed using the unweighted pair group method with arithmetic average (UPGMA) (Sneath and Sokal, 1973) though the software NTSYS-pc version 1.80 (Rohlf, 1993). Polymorphic information content (PIC) values were calculated for each RAPD and SSR primer according to the formula: $PIC = 1 - \sum (P_{ij})^2$, where P_{ij} is the frequency of the i^{th} pattern revealed by the j^{th} primer summed across all patterns revealed by the primers (Botstein et al., 1980). The similarity between matrices based on different marker system (RAPD and SSR) was calculated using the standardized Mantel coefficient (Mantel, 1967). The significance level for the correlation coefficient was calculated following Sokal and Rohlf (1995).

RESULTS

In RAPD analysis, a total of 93 bands was detected, among which 69 bands (74%) were polymorphic with the mean of 4.6 per primer (Table 2). For each primer, the number of bands ranged from 4 to 10, with an average of 6.2. The average polymorphic information content (PIC) was 0.447, ranging from 0.111 to 0.854. The lowest and the highest PIC values were recorded for primers OPH13, OPF03 and OPD20, respectively.

In SSR analysis, a total of 43 bands were observed, with 2.87 bands per primer (Table 3). Thirty nine out of 43 bands (84.7%) were polymorphic, among which 2 to 4 polymorphic bands were detected by each primer. The average PIC was 0.533, and the lowest and highest PIC values were 0.133 (SSR12) and 0.974 (SSR4), respectively. Three SSR primers (i.e. SSR1, SSR2, and SSR5) had the higher PIC values.

All the 77 bands, generated from 15 RAPD primers, were subjected to calculate the genetic dissimilarity index (RAPD-GD) among the 14 accessions. The RAPD-GD value ranged from 0.114 to 0.933, with the mean of 0.523. The highest genetic similarity was found between Tozeur 2 (from South) and Kébilli 3 (from South), while the lowest genetic similarity was observed between Manel (from North) and Tozeur 1 (from South). The dendrogram of genetic distances (Figure 1) was constructed based on UPGMA Method using midpoint joining procedure of Nei and Li, (1979) dissimilarity matrix.

According to genetic distances dendrogram obtained by RAPD markers and referring to a similarity rate of

Table 3. SSR code number and characteristics of the 15 selected SSR primers, number of loci and polymorphic loci and polymorphic information content value generated by each primer.

Primer code	Primer sequence	Number of loci	Polymorphic loci	Polymorphic information content value
GB391	F: AgCTCCTTTCTCCCTTCC R: CCAACATCTCCTCCTCTgA	3	3	0.867
VITR1	F: CCACTTgCCAAACACTAgACCC R: TTCATgCAgATCgggCCAC	3	2	0.949
MAG149	F: CAAgCCAACAgggTAgTC R: ATTCggTTTCTAgAggAAgAA	2	2	0.49
GB371	F: CACCAAgTTCACCTCgTCCT R: TTATTCAggCAGCACCATTg	3	3	0.439
BMAC624	F: AAAAgCATTCAACTTCATAAgA R: CAACgCCATCACgTAATA	2	2	0.934
MAG210	F: ACCTACAgTTCaATAgCTAgTACC R: gCACAAAACgATTACATCATA	4	4	0.617
MAG13	F: AAggggAATCAAAATgggAg R: TCgAATAggTCTCCgAAgAAA	3	2	0.485
GB318	F: CggCTCAAggTCTCTTCTTC R: TATCTCAgATgCCCCTTTC	4	4	0.582
GB357	F: gCTCCAgggCTCCTCTTC R: AgCTCTCTCTgCACgTCCTT	2	2	0.459
V13GEIII	F: AggAACCCCTACgCCTTACgAg R: AggACCgAgAgTggTggTgg	2	2	0.459
VB32D	F: ggTAgCAgACCgATggATgT R: ACTCTgACACgCACgAACAC	4	4	0.332
GB402	F: CAAgCAAgCAAgCAgAgAgA R: AACTTgTggCTCTgCgACTC	3	2	0.974
VGLUEND	F: TTCgCCTCCATCCACAAAg R: gCAgAACgAAAACgACATgC	2	2	0.337
GB384	F: CTgCTgTTgCTgTTgTCgTT R: ACTCggggTCCTTgAgTATg	3	2	0.133
MS1	F: CTgACCCTTTgCTTAACATgC R: TCAgCgTgACAAACAATAAAgg	3	3	0.163
Total		43	39	7.99
Average		2.87	2.6	0.533

65, we distinguished five groups. The first group is composed of two sub-groups [(‘Tozeur 2’, ‘Kébelli 3’, ‘Kalaâ’, ‘Martin’ and ‘Kélibia 2’) and (‘Jendouba 1’, ‘Jendouba 2’ and ‘Sidi Bouzid’)]. The similarity percentage between accessions of the first sub-group varies between 77.42 and 90.77; but that of the second sub-group ranged between 68 and 76. The accessions ‘Kébelli 1’, ‘Kébelli 2’ and ‘Kassrine’ from the second group have similarities varying from 73.17 to 82.93. Finally, the accessions ‘Tozeur 1’, ‘Kélibia 1’ and ‘Manel’ form groups III, IV and V, respectively; the Manel’s distance from ‘Tozeur 1’ and ‘Kélibia 1’ is of 93.33 and 75, respectively. Despite being collected from the same region, the accession ‘Tozeur 1’ is distant from ‘Tozeur 2’; ‘Kébilli 3’ is distant from ‘Kébilli 1’ and ‘Kébilli 2’ since they

are classified in different groups. The same case is observed for the accessions ‘Kélibia 1’ and ‘Kélibia 2’. It’s also to be remarked that the group consisted of Manel is very far away from the others.

Figure 2 is the dendrogram generated from SSR data. The obtained profiles were analyzed showing a genetic dissimilarity matrix between local barley accessions. A dendrogram of dissimilarity was built. Phylogenetic constructions were based on UPGMA method. The dendrogram obtained showed 4 groups. The first group gathered the accessions ‘Sidi Bouzid’, ‘Jendouba 1’, ‘Jendouba 2’ and Manel. The GD between Sidi Bouzid and Jendouba 1 is 17.65, which means that these accessions may have a common parent as they share the same morphological traits (growth habit, ear

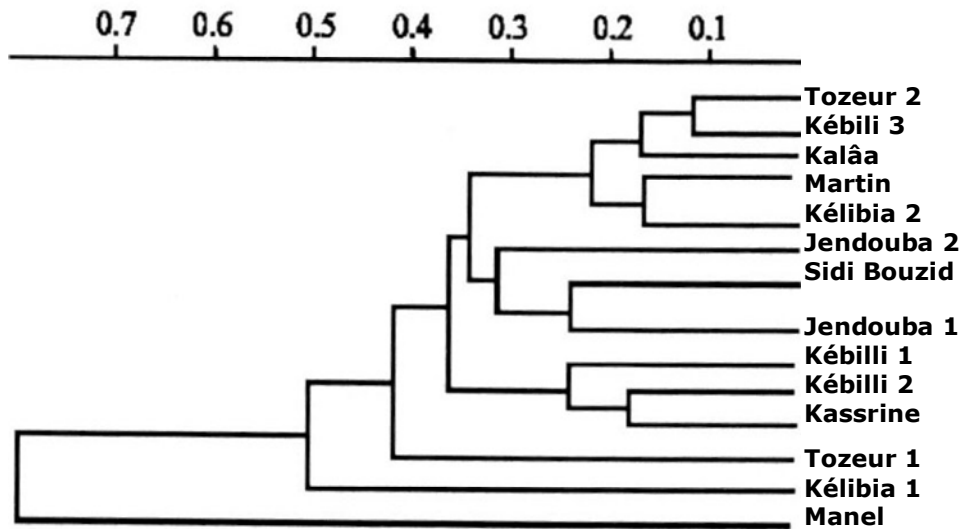


Figure 1. phylogenetic dissimilarity distance generated by RAPD markers using UPGMA procedure according to Nei and Li (1979).

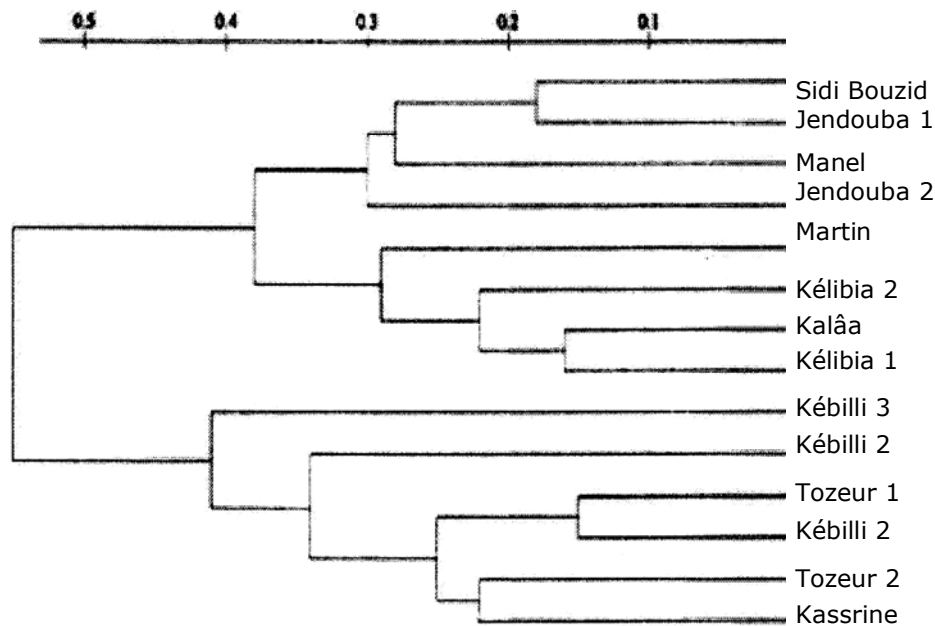


Figure 2. phylogenetic dissimilarity distance generated by SSR markers using UPGMA procedure according to Nei and Li (1979).

attitude, ear density and sterile spikelet attitude). Although they were collected from different origins, accessions of Jendouba presented a GD < 30 related to Manel. In fact they showed some common morphological traits especially ear attitude, car density and sterile spikelet attitude. They differed only in growth habit, which is usually affected by environmental conditions, as they were collected from different climatic stage. This relative small GD could be explained by exchange of seeds

between farmers.

The second group consisted of Kélibia 1, Kélibia 2, Kalaâ and Martin. The first two accessions belonging to the same origin showed a GD < 20 which means that farmers sowed mixture of seeds. However, Kélibia 1 and Kalaâ were genetically different only by 16.29, which means that they are probably relatives. Also, Martin, an introduced variety from Algeria, presented a GD < 30 with the other accessions of the same group. This could

be explained by the fact that these accessions derived from Martin variety as they inherited some morphological traits such as ear attitude and sterile spikelet attitude.

The third group formed by Kébilli 3 and the last one associated Kébilli 1, Kébilli 2, Tozeur 1, Tozeur 2 and Kasserine. This group gathered accessions originating from the south of Tunisia except Kasserine that belong to the Center. The smallest GD (15) was noticed between Tozeur 1 and Kébilli 1. These two accessions were similar in the morphological traits. The other accessions presented GD situated between 20 and 30 and shared most of the morphological traits. It is to be noticed that GD between east northern accessions (Kélibia 1, Kélibia 2 and Kalaâ) and southern ones is very important; it is about 72.89. The Martin variety presented also a GD > 60 related to these accessions, which means that farmers do not sow Martin in the South of Tunisia since it is characterized by drought sensitivity. However, this variety is well spread in North of Tunisia characterized by a sub-humid to humid climate.

The relationship between the distances based on RAPD and the SSR markers matrices was calculated using the Mantel test (Mantel, 1967). In fact we found a low matrix correlation coefficient ($r = 0.176$) indicating that both sets of markers revealed the unrelated estimates of genetic relationships.

DISCUSSION

In this study, we used a minimum of ten individuals for representing the each barley accession. The results indicated that the percentage of SSR polymorphic bands (83.9%) was higher than that of RAPD (74%). The mean number of amplification RAPD bands (4.2) was more than that of SSR (2.87). However, the mean polymorphism information content (PIC) (0.447) in SSR analysis was higher than that in RAPD analysis (0.533). The results in this study suggested that the SSR markers were superior to RAPD markers in the capacity of revealing more informative bands in a single amplification. The similar results were observed by other authors (Sosinski et al. 2000; Cheng et al., 2004)

Due to its worldwide distribution, the valuation of the genetic diversity among barley germplasm from different countries has been performed (Tanyolac, 2003; Liu et al., 2002; Fernández et al., 2002; Matus et al., 2002; Dávila et al., 1999a, 1999b; Dávila et al., 1998; Konishi, 2001; Bustos et al., 1998; Bjornstad et al., 1997; Chen et al., 2000b; Feng et al., 2003). Bernard et al. (1997) analyzed the genetic diversity in 88 genotypes from 20 populations of wild barley from Israel, Turkey and Iran by RAPD markers. When the total genetic diversity was estimated, 75% of the variation detected was partitioned within the 88 genotypes and 25% among the populations. When variation between countries was assessed, no substantial

differences were found, because most of the variation detected (97%) was partitioned within the 20 populations and the remainder among the countries. Russell et al. (1997) found that the average genetic diversity based on RAPD analyses of eighteen accessions from Netherlands, France, Great Britain, Germany and Italy was 0.521. Bahattin (2003) assayed 15 wild barley populations from west Turkey by using RAPD and ISSR markers. The results revealed that the average genetic similarity was 0.27 and the genetic variation was higher than that found by Nevo et al. (1979) and Nevo et al. (1986) both using isozyme markers. In the present study, the average genetic dissimilarities of barley accessions from Tunisia based on RAPD and SSR markers were 0.523 and 0.674, respectively. Baird et al. (1996) also found similar results. The genetic variation found in this study was equivalent with that found by Chen et al. (2000a) (0.81), Shi et al. (2004) (0.631) and Chen et al. (2000b) (0.746) both using RAPD markers to analyze the genetic variation of different barley populations from China. But the variation was relatively lower than that from other countries (Russell et al. 1997; Bahattin 2003).

In this study, it was obvious that the dendrogram based on RAPD markers was not in accord with the dendrogram based on SSR markers. The dendrogram generated by the RAPD matrix agrees better with the groups of the genotypes than the dendrogram generated by the SSR results (Figure 1). Most of the accessions were closely related. However, the dendrogram generated by the SSR matrix seemed to be effective to discriminate local barleys defined as accessions or populations geographically based (Ben Hmida, 2000). It is also a valuable tool for assessing genetic diversity levels. In fact in our study, dendrogram obtained by SSR markers classified the studied barley accessions according to climatic stage and some morphological traits especially ear attitude, ear density and sterile spikelet attitude, which could be genetically inherited independently from the environmental conditions. Yang et al. (2001) found the dendrogram generated by the SSR matrix agrees better with the genealogy and the known pedigree of the barley cultivars than the dendrogram generated by the RAPD results. Wu et al. (2004) found that the data based on RAPD were more correlated with the geographic distribution of the genus *Houttuynia Thunb*, while the data based on SSRs were closely related with their number of chromosomes. Although both RAPD and SSR methods compare the genetic diversity of different barley groups based on DNA marker information, the results were different (Kantety et al. 1995). This could be a result of the selection of accessions and the number of cultivars included within each variety group. In addition, the different molecular techniques might also affect the result (Tian et al., 2008). It could be partially explained by the importance of the number of loci and their coverage of the overall genome and obtained reliable estimates of genetic relationship among the studied materials (Fernández et al., 2002).

Similar results had been observed by Loarce et al. (1996). On the other hand, the relationship observed using molecular markers may provide information on the history and biology of cultivars, but it does not necessarily reflect what may be observed with respect to agronomic traits (Métais et al., 2000). The selection process leads to an accumulation of best alleles for the traits under selection. RAPDs and SSRs are dispersed throughout the genome and their association with agronomic traits is influenced by the breeder only in the region under selection pressure. The other loci are subjected to random genetic drift (Fernández et al., 2002). Another explanation could be that the putatively similar bands originating for RAPDs in different bulked samples were not necessarily homologous although they shared the same size in base pairs (Karp et al., 1997). This situation might lead to wrong results when calculating genetic relationships (Fernández et al., 2002).

ACKNOWLEDGEMENTS

Authors are grateful to Dr. Juutta Ahlemeyer, Department of Plant Breeding Institute of Agronomy and Plant Breeding I Justus-Liebig University Giessen Heinrich-Buff-Ring, for Mantel analysis help.

REFERENCES

- Akkaya MS, Bhagwast AA, Cregan PB (1992). Length polymorphisms of simple sequence repeat DNA in soybean. *Genetics*, 132: 1131-1139.
- Bahattin T (2003). Inter-simple sequence repeat (ISSR) and RAPD variation among wild barley (*Hordeum vulgare* subsp. *spontaneum*) populations from west Turkey. *Genet. Res. Crop Evol.* 50: 611-614.
- Baird WV, Ballard RE, Rajapkse S, Abbott AG (1996). Progress in Prunus mapping and application of molecular markers to germoplasm improvement. *Hort. Sci.* 31: 1099-1106.
- Barua UM, Chalmers KJ, Hackett CA, Thomas WTB, Powell W, Waugh R (1993). Identification of RAPD markers linked to a phynchosporium secalis resistance locus in barley using nearisogenic lines and bulked segregant analysis. *Heredity*. 71: 177-184.
- Ben Hmida SW (2000). Contribution des marqueurs microsatellites et RAPD pour l'étude du polymorphisme chez l'orge. Diplôme d'étude approfondie de génétique et biologie moléculaire. *Fac. Sci. Tunis*.
- Bernard RB, Nevo E, Douglas AJ, Beiles A (1997). Genetic diversity in wild barley (*Hordeum spontaneum* C. Koch) in the near east: a molecular analysis using random amplified polymorphic DNA (RAPD) markers. *Genet. Res. Crop Evol.* 44: 147-157.
- Bustos AD, Casanova C, Soler C, Jouve N (1998). RAPD variation in wild populations of four species of the genus *Hordeum* (*Poaceae*). *Theor. Appl. Genet.* 96: 101-111.
- Botstein D, White RL, Skolnick M, Davis RW (1980). Construction of a genetic linkage map in man using restriction fragment length polymorphisms. *Am. J. Hum. Genet.* 32: 314-331.
- Chen XP, Yan L, Ding Y, Gao WX (2000a). Analysis of germplasms of Hubei barley by randomly amplified polymorphic DNA (RAPD). *J. Wuhan Univ. (Natural Science Edition)*. 46: 249-252.
- Chen XP, L Yan, Y Ding (2000b). RAPD analysis and the probable evolutionary route of wild relatives of barley from China. *Acta Bot. Sinica*. 42: 179-183.
- Cheng ZP, Huang HW (2004). Genetic diversity and genetic structure of different groups in *Prunus persica* revealed by RAPD analysis (in Chinese with an English abstract). *J. Wuhan Bot. Res.* 22: 27-32.
- Chalmers KJ, Barua UM, Hackett CA, Thomas WTB, Waugh R, Powell W (1993). Identification of RAPD markers linked to genetic factors controlling the milling energy requirement of barley. *Theor. Appl. Genet.* 87: 314-320.
- Dávila JA, Loarce Y, Ramsay L, Waugh R, Ferrer E (1999a). Comparison of RAMP and SSR markers for the study of wild barley genetic diversity. *Hereditas*. 131: 5-13.
- Dávila JA, Loarce Y, Ferrer E (1999b). Molecular characterization and genetic mapping of random amplified microsatellite polymorphism in barley. *Theor. Appl. Genet.* 98: 265-273.
- Dávila JA, Sánchez MP, Loarce Y, Ferrer E (1998). The use of random amplified microsatellite polymorphic DNA and coefficients of parentage to determine genetic relationship in barley. *Genome*. 41: 477-486.
- Devos KM, Gale MD (1992). The use of random amplified polymorphic DNA markers in wheat. *Theor. Appl. Genet.* 84: 567-572.
- Feng ZY, Zhang YZ, Zhang LL, Ling HQ (2003). Genetic diversity and geographical differentiation of *Hordeum vulgare* ssp. *spontaneum* in Tibet using microsatellite markers. *High Technol. Lett.* 10: 46-53.
- Fernández ME, Figueiras AM, Benito C (2002). The use of ISSR and RAPD markers for detecting DNA polymorphism, genotype identification and genetic diversity among barley cultivars with known origin. *Theor. Appl. Genet.* 104: 845-851.
- Joshi CP, Nguyen HT (1993). RAPD (Random amplified polymorphic DNA) analysis based on intervarietal genetic relationships among hexaploid wheats. *Plant Sci.* 93: 95-103.
- Karp A, Edwards K, Bruford M (1997). Newer molecular technologies for biodiversity evaluation: opportunities and challenges. *Nat. Biotechnol.* 15: 625-628.
- Kantety RV, Zeng XP, Bennetzen JL, Zehr BE (1995). Assessment of genetic diversity in Dent and Popcom (*Zea mays* L.) inbred lines using inter-simple sequence repeat (ISSR) amplification. *Mol. Breed.* 1: 365-373.
- Konishi T (2001). Genetic diversity in *Hordeum agriocrithon* E. Åberg, six-rowed barley with brittle rachis, from Tibet. *Genet. Res. Crop Evol.* 48: 27-34.
- Loarce Y, Gallego R, Ferrer E (1996). A comparative analysis of genetic relationship between rye cultivars using RFLP and RAPD markers. *Euphytica*. 88: 107-115.
- Liu F, Sun GL, Salomon B, Bothmer R (2002). Characterization of genetic diversity in core collection accessions of wild barley, *Hordeum vulgare* ssp. *spontaneum*. *Hereditas*, 136: 67-73.
- Matus IA, Hayes PM (2002). Genetic diversity in three groups of barley germplasm assessed by simple sequence repeats. *Genome*, 45: 1095-1106.
- Mantel M (1967). The detection of disease clustering and a generalized regression approach. *Cancer. Res.* 27: 209-220.
- Métais I, Aubry C, Hamon B, Jalouzet R (2000). Description and analysis of genetic diversity between commercial bean lines (*Phaseolus vulgaris* L.). *Theor. Appl. Genet.* 101: 1207-1214.
- Nevo E, Zohary D, Brown AHD, Haber M (1979). Genetic diversity and environmental associations of wild barley, *Hordeum spontaneum*, in Israel. *Evolution*, 33: 815-833.
- Nevo E, Zohary D, Beiles A, Kaplan D, Storch N (1986). Genetic diversity and environmental associations of wild barley, *Hordeum spontaneum*, in Turkey. *Genetica*, 68: 203-213.
- Nagaoka T, Ogihara Y (1997). Applicability of inter-simple sequence repeat polymorphism in wheat for use as DNA markers in comparison to RFLP and RAPD markers. *Theor. Appl. Genet.* 94: 597-602.
- Nei M, Li W (1979). Mathematical model for studying genetic variation in terms of restriction endonucleases. *Proc. Natl. Acad. USA.* 76: 5269-5273.
- Plucknett DL, Smith NJH, Williams JT, Murthi AN (1987). *Genebanks and the world's food*. Princeton University Press, Princeton New Jersey, USA.
- Powell W, Morgante M, Andre C (1996). The comparison of RFLP, RAPD, AFLP and SSR (microsatellite) marker for germplasm analysis. *Mol. Breed.* 2: 225-238.
- Qian W, Ge S, Houg DY (2001). Genetic variation within and among populations of a wild rice *Oryza granulata* from China detected by RAPD and ISSR markers. *Theor. Appl. Genet.* 102: 440-449.
- Rohlf FJ (1993). NTSYS-pc version 1.80. Distribution by Exeter

- Software, Setauket, New York.
- Russell JR, Fuller JD, Macaulay M, Hatz BG, Jahoor A, Powell W, Waugh R (1997). Direct comparison of levels of genetic variation among barley accessions detected by RFLPs, AFLPs, SSRs and RAPDs. *Theor. Appl. Genet.* 95: 714-722.
- Sokal RR, Rohlf FJ (1995). *Biometry: The principles and practice of statistics in biological research.* (3rd edition). WH Freeman and Company. New York. USA.
- Saiki RK, Gelfond DH, Stoffel S, Scharf SJ, Higuchi R, Horn BT, Mullis KB, Erlich HA (1988). Primer-directed enzymatic amplification of DNA with a thermostable DNA polymerase. *Science*, 239: 487-491.
- Sánchez de la Hoz MP, Dávila JA, Loarce Y, Ferrer E (1996). Simple sequence repeat primers used in polymerase chain reaction amplifications to study genetic diversity in barley. *Genome*, 39: 112-117.
- Sosinski B, Gannavarapu M, Hager LD, Beck LE, King GJ, Ryder CD (2000). Characterization of microsatellite markers in peach (*Prunus persica* (L.) Batsch). *Thor.Appl.Genet.* 101: 421-428.
- Struss D, Plieske J (1998). The use of microsatellite markers for detection of genetic diversity in barley populations. *Theor. Appl. Genet.* 97: 308-315.
- Shi YT, Bian HW, Han N, Pan JW, Tong WX, Zhu MY (2004). Genetic variation analysis by RAPD of some barley cultivars in China. *Acta Agron. Sinica.* 30(3): 258-265.
- Sneath PHA, Sokal RR (1973). *Numerical Taxonomy.* Freeman, San Francisco.
- Tragoonrung S, Kanazin V, Hayes PM, Blake TK (1992). Sequence-tagged-site facilitated PCR for barley genome mapping. *Theor. Appl. Genet.* 84: 1002-1008.
- Tanyolac B (2003). Inter-simple sequence repeat (ISSR) and RAPD variation among wild barley (*Hordeum vulgare* subsp. *spontaneum*) populations from west Turkey. *Genet. Res. Crop Evol.* 50: 611-614.
- Tian HL, Yin XL, Zi CL, Hong LZ, Yong WQ, Tao W (2008). Simple sequence repeat analysis of genetic diversity in primary core collection of peach (*Prunus persica*). *J. Integr. Plant. Biol.* 50: 102-110.
- Tinker NA, Fortin MG, Mather DE (1993). Random amplified polymorphic DNA and pedigree relationship in spring barley. *Theor. Appl. Genet.* 85: 976-984.
- Von Bothmer R, Jacobsen N, Baden C, Jørgensen RB, Linde-Laursen I (1995). An ecogeographical study of the genus *Hordeum*. *Int. Plant Genet. Res. Rome* P.29.
- Welsh J, McClelland J (1990). Fingerprinting genomes using PCR with arbitrary primers. *Nucleic Acids Res.* 18: 7213-7218.
- Williams JGK, Kubelik AR, Livak KJ, Rafalski JA, Tingey SV (1990). DNA polymorphisms amplified by arbitrary primers are useful as genetic markers. *Nucleic Acids Res.* 18: 6531-6535.
- Wu KS, Rones J, Danneberger L (1994). Detection of microsatellite polymorphisms without cloning. *Nucleic Acids Res.* 22: 3257-3258.
- Wu W, Zheng YL, Chen L, Wei YM, Yang RW, Yan ZH (2005). Evaluation of genetic relationships in the genus *Houttuynia Thunb.* in China based on RAPD and ISSR markers. *Biochem. Syst. Ecol.* (Accepted).
- Yang XG, Zhang KC, Qin L, Wang YX (2001). RAPD analysis of germplasm resources on peach (in Chinese with an English abstract). *J. Fruit Sci.* 18: 276-279.
- Zietkiewicz E, Rafalski A, Labuda D (1994). Genome fingerprinting by simple sequence repeat (SSR)-anchored polymerase chain reaction amplification. *Genomics*, 20: 176-783.