

## DEVELOPMENT AND VALIDATION OF A SINGLE HPLC METHOD FOR THE DETERMINATION OF THIRTEEN PHARMACEUTICALS IN BULK AND TABLET DOSAGE FORM

Bisratewongel Tegegne<sup>1,2,3</sup>, Bhagwan Singh Chandravanshi<sup>1\*</sup>, Feleke Zewge<sup>1</sup>, Letitia Pillay<sup>2</sup> and Luke Chimuka<sup>2</sup>

<sup>1</sup>Department of Chemistry, College of Natural Sciences, Addis Ababa University, P.O. Box 1176, Addis Ababa, Ethiopia

<sup>2</sup>Molecular Sciences Institute, University of Witwatersrand, Private Bag X3, Johannesburg 2050, South Africa

<sup>3</sup>Department of Chemistry, College of Natural Sciences, Bahir Dar University, P.O. Box 79, Bahir Dar, Ethiopia

(Received March 14, 2020; Revised February 22, 2021; Accepted March 13, 2021)

**ABSTRACT.** The aim of this study was to develop and validate a high performance liquid chromatography (HPLC) method for the determination of thirteen selected pharmaceutical compounds (metformin, amoxicillin, chloroquine, theophylline, trimethoprim, caffeine, norfloxacin, ciprofloxacin, acetylsalicylic acid, doxycycline hyclate, metronidazole, albendazole and cloxacillin) in bulk and tablet dosage form. Chromatographic separation using a Kromasil C<sub>18</sub> column, gradient elution with aqueous formic acid (0.1%), methanol and acetonitrile, a UV absorption wavelength of 250 nm and a mobile phase flow rate of 1 mL/min over a 22 min run time was optimized for complete separation of the selected target compounds. The method was validated and results for: linearity, precision, sensitivity, accuracy, specificity, suitability and method robustness were obtained and met the ICH guidelines. Calibration curve correlation coefficients ranged from 0.9985–0.9998 and the percentage relative standard deviations for repeated analysis was below 5%, indicating acceptable method precision. The limits of detection (LODs) and quantification (LOQs) ranged from 0.020–0.27 µg/L and 0.080–0.91 µg/L, respectively. The accuracy study yielded recoveries in the ranges 86.0–102% for pure compounds and 90.9–106% for compounds in tablet dosage form. The method is robust for small or deliberate changes to the chromatographic parameters and found to be appropriate for analysis of tablets for the determination of the thirteen pharmaceuticals.

**KEY WORDS:** Pharmaceuticals, Bulk determination, Tablet dosage, High performance liquid chromatography, Method development, ICH guidelines

### INTRODUCTION

Pharmaceuticals are synthetic or natural chemicals that are used extensively in human and veterinary medicine to prevent illness. They are also used as growth promoters that contain active ingredients designed to have pharmacological effects and confer significant benefits [1, 2]. After administration, a part of the consumed pharmaceuticals is excreted as metabolites and unchanged parent compounds largely through the urine and feces [3]. Classification of pharmaceuticals into various classes may be based on their pharmacological properties, such as their therapeutic effects. Those selected for this study are frequently prescribed drugs that are also detected in the environment.

Antibiotics are natural, semi-synthetic or synthetic drugs used as antibacterial, antifungal or anti-parasitic agents and are important medicines [4]. Widely used antibiotics include amoxicillin (AMOX), which is used to combat bacterial infections [5], and ciprofloxacin (CIP) a synthetic fluoroquinolone derivative with broad-spectrum activity against many pathogenic gram-positive bacteria [6]. Cloxacillin (CLA) belongs to the semi-synthetic β-lactam antibiotics

\*Corresponding author. E-mail: bsev2006@yahoo.com

This work is licensed under the Creative Commons Attribution 4.0 International License

used against staphylococci that produce beta-lactamas [7], while doxycyclinehydrate (DOXH), a broad spectrum tetracycline antibiotic with a large range of antibacterial activities [8]. A member of the fluoroquinolones third-generation antibiotics, norfloxacin (NOR), is used for the treatment of diseases caused by *Campylobacter*, *Escherichia coli*, *Shigella* and *Vibrio cholera* and used to treat gonorrhoea and urinary tract infection [9]. The antibiotic trimethoprim (TMP) is used for protozoal infections [10], while metronidazole (MTZ) is prescribed for treatment and prophylaxis of anaerobic bacterial infections and specific bacterial infections [11].

Anthelmintics are drugs that are used to eject parasitic worms from the gastro-intestinal tract by either stunning or killing them [12]. Albendazole (ABZ) is one of several broad-spectrum benzimidazole parasiticides used for treatment of parenchymal neurocysticercosis [13].

Anti-malarial drugs such as chloroquine (CHQ) are used for treating fever caused by malaria. Chloroquine is also prescribed to decrease the symptoms of rheumatoid arthritis and to treat systemic and discoid lupus erythematosus in adults [14].

Nonsteroidal anti-inflammatory drugs (NSAIDs) are used for treatment of fever, pain and inflammation. Acetyl salicylic acid (ASA), also known as aspirin, with the chemical name 2-acetoxybenzoic acid, is one of the most widely used drugs in the world and exerts analgesic, antipyretic and anti-inflammatory effects [15, 16].

Central nervous system stimulants are a group of drugs that produce an increase in mental and motor activity. 1,3,7-Trimethylxanthine, commonly referred to as caffeine (CAF) acts as a stimulant psychotrope and as a mild diuretic [17], while theophylline (THP) displays anti-inflammatory activities by inhibiting the activity of CD4 lymphocytes *in vitro* and through mediator release from mast cells [18].

Anti-diabetic metformin (MET) is used in the treatment of diabetes mellitus II, since it suppresses the production of hepatic glucose, and thus attenuates hyperglycemia [19].

Many authors have described the determination of pharmaceuticals in pure, tablet dosage form and real sample using a range of analytical techniques. Analytical techniques including liquid chromatography (LC) and gas chromatography (GC) are commonly employed for the separation and determination of compounds in mixtures, but liquid chromatography is mostly used to determine pharmaceuticals, since they are mostly non-volatile [20, 21]. Liquid chromatographic methods for amoxicillin [22], albendazole [23], chloroquine [24], acetylsalicylic acid [16], caffeine [25], metronidazole [26], theophylline [27] and ciprofloxacin [28] have been reported. Spectrophotometric methods for amoxicillin [29], cloxacillin [30], ciprofloxacin [31], trimethoprim [32], albendazole [23], chloroquine [33], metronidazole [26] and for metformin [34] has been reported. Electrochemical methods for metronidazole [35], caffeine and theophylline [36], albendazole [37] and acetylsalicylic acid [38]; a kinetic method for amoxicillin [5] and a method using chemiluminescence for norfloxacin [39] are available in literature.

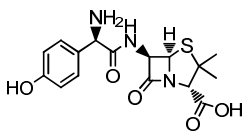
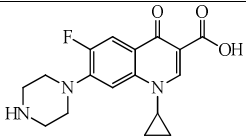
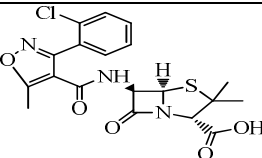
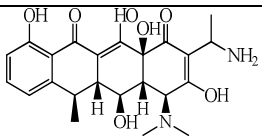
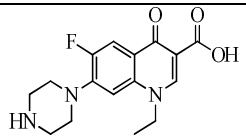
To the best of our knowledge there is no single HPLC method reported for the simultaneous determination of these selected pharmaceutical compounds of different therapeutic classes. This study attempts to develop a simple, accurate, precise and stable analytical chromatographic method, which can separate and determine thirteen selected pharmaceutical drugs simultaneously in a single optimized method in bulk and commercial tablet dosage form. The proposed method has been developed and validated as per the ICH guidelines for the analysis. Developing such an analytical method is more cost-effective than changing parameters for each analyte for the analysis of real samples. The developed method is suitable for laboratories that are not equipped with highly specialized state-of-the-art instrumentation. The method will still give a sufficiently accurate determination of the selected compounds.

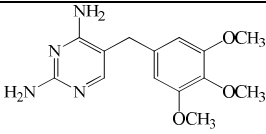
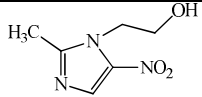
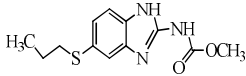
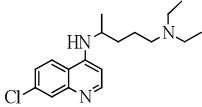
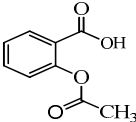
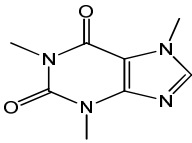
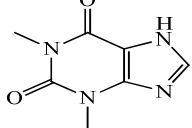
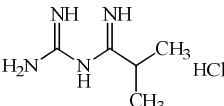
## EXPERIMENTAL

*Chemicals, reagents and equipment*

All the chemicals used for method development were analytical grade. The HPLC grade methanol (>99%) and HPLC grade acetonitrile (>99.9%) were from Fisher Scientific (UK), the formic acid (>96%) from Sigma Aldrich (Germany) and acetic acid (99%) from Fisher Chemicals (UK). Ultra-pure water used throughout the study was generated using a Millipore system (Direct-Q 3 UV with pump, South Africa). Pharmaceutical standard compounds (assigned purity  $\geq 99\%$ ), listed in Table 1, were a kind donation from Addis Pharmaceuticals (Adigrat, Ethiopia) and tablets containing the target active compound were purchased from the local market in Addis Ababa, Ethiopia. Chromatographic separation was performed on an Agilent HPLC 1260 Series equipped with quaternary pump, auto sampler and diode array detector from Agilent Technologies (Singapore, Germany). Data acquisition and processing were accomplished with LC Chemstation software (Agilent Technologies).

Table 1. Selected pharmaceuticals of different therapeutic classes used for method development.

Therapeutic class	Molecular formula	Molecular weight (g/mol)	Structure of the compound	Maximum absorption wavelength, $\lambda_{\max}$ (nm)
<b>Antibiotics</b>				
Amoxicillin	$C_{16}H_{25}N_3O_7S$	365.5		335
Ciprofloxacin	$C_{17}H_{18}FN_3O_3$	331.3		280
Cloxacillin	$C_{19}H_{19}ClN_3NaO_6S$	435.8		254
Doxycyclinehyclate	$C_{22}H_{24}N_2O_8$	444.4		273
Norfloxacin	$C_{16}H_{18}FN_3O_3$	319.3		273

Trimethoprim	$C_{14}H_{18}N_4O_3$	290.3		271
Metronidazole	$C_6H_9N_3O_3$	171.2		340
<b>Anthelmintic</b>				
Albendazole	$C_{12}H_{15}N_3O_2S$	265.3		235
<b>Anti-malarial</b>				
Chloroquine	$C_{18}H_{26}ClN_3$	319.8		343
<b>NSAIDs</b>				
Acetyl salicylic acid	$C_9H_8O_4$	180.2		256
<b>Stimulant</b>				
Caffeine	$C_8H_{10}N_4O_2$	194.2		275
Theophylline	$C_7H_8N_4O_2$	180.2		272
<b>Anti-diabetic II</b>				
Metformin	$C_4H_{12}ClN_5$	129.2		231

#### Chromatographic separation

Chromatographic separation of the thirteen selected pharmaceutical compounds was achieved using a Kromasil  $C_{18}$ , 5  $\mu\text{m}$  (4.6 mm x 150 mm x 5  $\mu\text{m}$ ) column (Sigma Aldrich, (Stockholm, Sweden) held at ambient temperature. A combination of 0.1% aqueous formic acid, acetonitrile and methanol was used as mobile phase at a flow rate of 1 mL/min. The detector was set to

detect at 250 nm UV absorbance. An aliquot of 10  $\mu\text{L}$  of a mixture of the selected compounds were injected into the system. The total run time was 22 min.

#### *Preparation of standard solutions*

Mixed stock solutions of twelve pharmaceutical standards (200  $\mu\text{g}/\text{mL}$ ) were prepared by dissolving 10 mg with ultra-pure water/methanol (50:50, v/v) in 50 mL volumetric flask. A stock solution of ciprofloxacin, which is insoluble in methanol, was dissolved in ultra-pure water (200  $\mu\text{g}/\text{mL}$ ) and stored in the refrigerator. Series of working standard solutions for the method development were prepared daily with a mixture of ultra-pure water/methanol (90:10, v/v).

#### *Preparation of tablet sample solutions*

For the preparation of the sample solutions used for method validation, an accurately weighed amount of powder equivalent to 10 mg of each tablet was transferred completely to a 50 mL volumetric flask and dissolved with ultra-pure water/methanol (50:50, v/v). The ciprofloxacin powdered tablet was dissolved in ultra-pure water only. All the tablet powders were sonicated in the solvent for about 30 min and then filtered through Whatman filter paper number 1 (110 mm). The volume was adjusted to 50 mL followed by filtration through a 0.22  $\mu\text{m}$  membrane filter. Mixtures of series of sample solutions were prepared by dissolving with ultra-pure water and methanol (90:10, v/v).

#### *Parameter optimization*

Separation in liquid chromatography is highly affected by different factors including mobile phase (both solvent type and composition), the addition of additives, absorption wavelength and mobile phase flow rate. Different solvents (water, acetonitrile and methanol) and additives (formic acid and acetic acid) were evaluated for the separation of thirteen pharmaceutical compounds. The mixed standard solution was scanned in the wavelength region of 190–400 nm for wavelength selection for proper separation. The effect of mobile phase flow rate was also investigated using a different flow rate of 0.6, 1 and 1.3 mL/min. The chromatographic parameters were evaluated by taking both the resolution and symmetry of the peaks into account.

#### *Validation of the analytical method*

The developed method for the determination of selected pharmaceuticals was evaluated as per the ICH Q2 [40] guidelines protocol for, linearity, sensitivity, precision, accuracy, specificity, robustness, and system suitability.

## **RESULTS AND DISCUSSION**

#### *Mobile phase and additive selection*

The mobile phase was selected according to the physico-chemical properties of pharmaceutical drugs to provide good separation. Separation in liquid chromatography is highly affected by mobile phase, both solvent type and composition. Different solvents (water, acetonitrile and methanol) and additives (formic acid and acetic acid) were evaluated. From the examined mobile phase composition and additives, a combination of formic acid in water, acetonitrile and methanol resulted in the best resolution and a short run time. The effect of the concentration of

formic acid in the water on separation was also examined and 0.1% formic acid yielded the best resolution between analytes. The composition of the solvent was evaluated by taking both the resolution and symmetry of the peak into account. The optimum mobile phase comprised three solvents. Separation of the analytes was accomplished over 22 min using gradient elution with A (water with 0.1% formic acid), B (acetonitrile) and C (methanol). The gradient was applied as follows: program, 90-50% A, 1-20% B and 9-30% C (8 min), held at 50% A, 20 % B and 30% C (7 min) before changing to 50-30% A, 20-50% B and 30% C (2 min), to 30-5% A, 50-90% B, 30-5% C (3 min) and finally, to 5-90% A, 90-1% B and 5-9% C (2 min).

#### Wavelength selection

The optimum wavelength should be the one which shows good absorbance for all the selected compounds. The mixed standard solution was scanned in the wavelength region of 190–400 nm. It is evident from Figure 1 that 250 nm yielded the largest overall relative peak height for all the analytes compared to those obtained at 240 nm, 270 or 340 nm. It should be noted that Table 1 shows that three compounds (amoxicillin, metronidazole and chloroquine) have a maximum UV absorption at 340 nm or close to 340 nm. However, Figure 1 shows that only chloroquine had a good absorbance at 340 nm while amoxicillin and metronidazole do not had good absorbance at 340 nm. This is because the absorbance of a compound depends on the type of solvent, concentration and molar absorptivity. This indicates that amoxicillin and metronidazole have smaller molar absorptivity in the solvent used. No absorption of amoxicillin and metronidazole at 340 nm may also be due effect of the other compounds present in the mixture. Therefore, 250 nm was selected as an optimum wavelength at which all the thirteen compounds showed good absorbance. It should also be noted that using a wavelength of 250 nm (the selected wavelength) would certainly diminish the sensitivity of the detector towards analytes with UV max above 300 nm. Although this would not really matter for pharmaceutical products containing high concentrations of the active ingredient, since the analytes are easily detected, small differences in concentrations would not be picked up for these compounds.

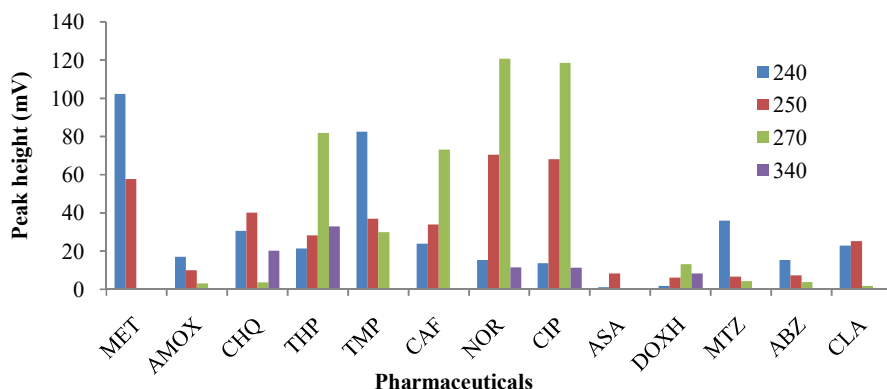
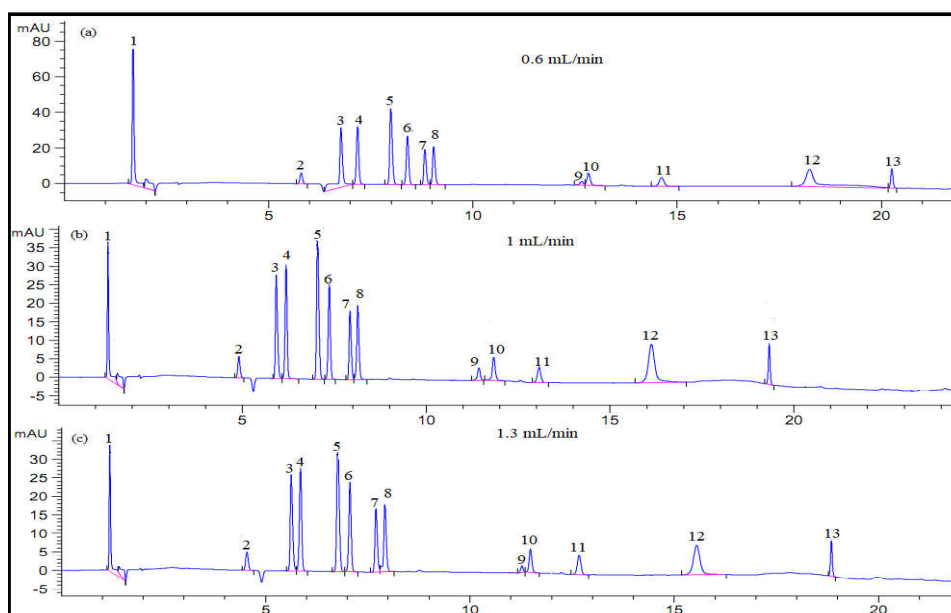


Figure 1. Detector response of 13 selected pharmaceutical drugs analysed using four different UV wavelengths to enable selection of the optimal wavelength.

#### Mobile phase flow rate optimization

The interaction of the compound with the stationary and the mobile phase affects the resolution of the peaks, in addition to the flow rate of the mobile phase. It was observed that the increase

in flow rate (1.3 mL/min) decreased the retention time of all analyte compounds, it adversely affected the resolution of some compounds. A faster mobile phase flow limits the interaction of analyte with the stationary phase. While decreasing the flow rate (0.6 mL/min) increased the retention times and total run time, it caused and leads to broadening of the peaks and yielded poorly resolved peaks, compared to 1.0 mL/min which was selected as optimum flow rate (Figure 2). In this study the first peak, which was due to the elution of metformin, was controlled by avoiding contamination with frequent injection in the system by running the blank after each run.



<sup>1</sup>(Metformin), <sup>2</sup>(Amoxicillin), <sup>3</sup>(Chloroquine), <sup>4</sup>(Theophylline), <sup>5</sup>(Trimethoprim), <sup>6</sup>(Caffeine), <sup>7</sup>(Norfloxacin), <sup>8</sup>(Ciprofloxacin), <sup>9</sup>(Acetyl salicylic acid), <sup>10</sup>(Doxycycline hyclates), <sup>11</sup>(Metronidazole), <sup>12</sup>(Albendazole), <sup>13</sup>(Cloxacillin)

Figure 2. Chromatograms obtained using different mobile phase flow rates (a) 0.6 mL/min, (b) 1 mL/min and (c) 1.3 mL/min.

#### Validation of the analytical method

##### Linear range

The ability of the assay to give data that is directly proportional to the concentration of analyte that the sample contains is referred to as linearity. Similarly, the range refers to the highest and lowest concentration of the analyte that can be detected by the detector of the method with an appropriate accuracy, precision, and linearity [41]. The linearity of the method measured as peak areas against the corresponding concentrations of the analyte compounds were evaluated using the correlation coefficients ( $R^2$ ) as reported in (Table 2).

Table 2. Linear range, regression equation and correlation coefficient for each of the 13 selected pharmaceuticals when using the developed method.

Pharmaceutical compound	Linear range ( $\mu\text{g/mL}$ )	Regression equation	$R^2$
Acetyl salicylic acid	1.0 - 100	$y = 3.6181x + 1.3002$	0.9998
Albendazole	0.50 - 100	$y = 8.8529x + 13.169$	0.9988
Amoxicillin	2.5 - 100	$y = 2.4260x + 0.2300$	0.9998
Caffeine	0.50 - 100	$y = 10.167x + 6.0284$	0.9996
Chloroquine	0.50 - 100	$y = 11.150x + 7.5555$	0.9997
Ciprofloxacin	1.0 - 100	$y = 9.8126x + 5.7892$	0.9987
Cloxacillin	0.70 - 100	$y = 3.422x + 2.7597$	0.9991
Doxycycline hyclates	1.0 - 100	$y = 0.9325x + 5.5146$	0.9987
Metformin	0.50 - 100	$y = 9.0233x + 7.2918$	0.9993
Metronidazole	1.0 - 100	$y = 4.4886x + 9.6939$	0.9985
Norfloxacin	0.70 - 100	$y = 7.5441x + 1.4492$	0.9998
Theophylline	0.50 - 100	$y = 11.644x + 8.8687$	0.9994
Trimethoprim	0.25 - 100	$y = 16.536x + 9.2685$	0.9997

### Sensitivity

The limits of detection (LOD) and limits of quantification (LOQ) for each of the analytes were calculated from the standard deviation of the response and slope of the calibration curve of pharmaceutical compounds using the formula as per ICH guideline,  $3.3\sigma/s$  and  $10\sigma/s$ , respectively, where  $\sigma$  is the standard deviation of the response and  $s$  the slope of the calibration curve. The results are reported in Table 3, which shows that the LODs ranged from 0.02–0.27  $\mu\text{g/L}$  and the LOQs from 0.08–0.91  $\mu\text{g/L}$ .

Table 3. LODs, LOQs and precision obtained for the method developed for the simultaneous determination of selected pharmaceutical compounds.

Pharmaceutical compound	LOD ( $\mu\text{g/L}$ )	LOQ ( $\mu\text{g/L}$ )	Precision %RSD	
			Repeatability (%RSD, $n = 3$ )	Reproducibility (%RSD, $n = 3$ )
Acetyl salicylic acid	0.070	0.23	2.8	5.1
Albendazole	0.040	0.15	1.7	4.3
Amoxicillin	0.27	0.91	1.2	4.9
Caffeine	0.020	0.08	1.1	2.0
Chloroquine	0.030	0.12	1.4	3.3
Ciprofloxacin	0.030	0.09	1.2	5.1
Cloxacillin	0.16	0.53	1.3	2.6
Doxycycline hyclates	0.16	0.54	3.1	3.9
Metformin	0.15	0.33	3.0	5.2
Metronidazole	0.10	0.58	1.3	3.9
Norfloxacin	0.080	0.27	1.7	4.1
Theophylline	0.050	0.16	1.4	3.1
Trimethoprim	0.020	0.10	1.3	5.3

### Precision

The precision of the developed method was evaluated by performing intra-day and inter-day precision studies using a concentration of 1  $\mu\text{g/mL}$  of each analyte in solution. The measured peak areas were used to calculate the percent relative standard deviations (%RSDs). Intra-day



precision was carried out by analysing three replicates of a mixture of the standard pharmaceuticals on the same day. The measured peak areas were used to calculate the percentage relative standard deviations (%RSDs). The inter-day precision study was performed on three consecutive days by analyzing the mixture of all thirteen pharmaceutical drugs in triplicate and the % RSDs were calculated (Table 3). The result obtained for the precision study were regarded as acceptable for analysis, due to the small % RSDs that ranged from 1.1-5.3%, which were lower than the stipulated values of 15% [42].

Table 4. Results of the recovery studies of the developed HPLC method.

Pharmaceutical compound	Pre-analyzed standard			Pre-analyzed tablet	
	Spiked amount	Recovery (%)	Mean recovery $\pm$ SD	Recovery (%)	Mean recovery $\pm$ SD
Acetyl salicylic acid	50 %	86.8	86.3 $\pm$ 1.0	89.4	90.9 $\pm$ 10
	100 %	85.2		81.4	
	150 %	87.0		102	
Albendazole	100%	89.7	93.8 $\pm$ 7.7	89.2	95.1 $\pm$ 5.2
	150%	103		97.8	
	150%	89.0		98.5	
Amoxicillin	50 %	88.9	86.8 $\pm$ 1.8	99.6	97.0 $\pm$ 3.5
	100%	86.0		93.0	
	150%	85.5		98.5	
Caffeine	50 %	92.5	93.5 $\pm$ 1.7	83.1	91.9 $\pm$ 8.2
	100%	92.6		99.4	
	150%	95.6		93.1	
Chloroquine	50 %	88.7	87.9 $\pm$ 2.4	93.7	94.9 $\pm$ 11
	100%	85.2		107	
	150%	89.9		83.9	
Ciprofloxacin	50 %	89.9	102 $\pm$ 10	89.4	97.4 $\pm$ 7.0
	100%	105		103	
	150%	111		100	
Cloxacillin	50 %	96.0	92.2 $\pm$ 3.5	110	106 $\pm$ 4.0
	100%	89.0		104	
	150%	91.6		103	
Metformin	50 %	89.4	87.5 $\pm$ 1.7	105	105 $\pm$ 1.7
	100%	87.2		104	
	150%	85.9		107	
Doxycycline hyclates	50 %	108	100 $\pm$ 7.6	117	101 $\pm$ 9.6
	100%	93.7		95.2	
	150%	97.9		94.7	
Metronidazole	50 %	94.8	101 $\pm$ 10	115	104 $\pm$ 12
	100%	113		90.1	
	150%	95.5		106	
Norfloxacin	50 %	85.6	95.3 $\pm$ 9.2	98	99.6 $\pm$ 9.2
	100%	96.3		109	
	150%	104		91.3	
Theophylline	50 %	85.2	87.9 $\pm$ 2.8	103	101 $\pm$ 6.1
	100%	87.6		105	
	150%	90.9		93.8	
Trimethoprim	50 %	86.5	86.3 $\pm$ 0.8	108	98.5 $\pm$ 11
	100%	85.4		102	
	150%	86.9		85.8	

### Accuracy

To study the accuracy of the proposed method, recovery studies were carried out by applying standard addition at three different levels. A known amount of the mixture of pharmaceutical compounds (50%, 100% and 150%) of 10 mg/L was added to a pre-analyzed standard and sample solution. The percentage recoveries were calculated as reported in Table 4. Recoveries ranged from 86.0–102% for pure compounds and from 90.9–106% for tablet dosage forms, which are within the acceptable range [42]. The preparation of the solution and the ingredients other than the active compounds in the marketed tablet might be the reason for the difference in the recovery.

### Specificity

The specificity of the developed HPLC method was established by injecting the blank (solvent) and placebo solution without active pharmaceutical ingredient, into the HPLC system using the optimized conditions. The representative chromatogram of blank and placebo is shown in Figure 3 (a) and (b), respectively. No peaks were detected at the retention times corresponding to any of the target analytes considered in this study.

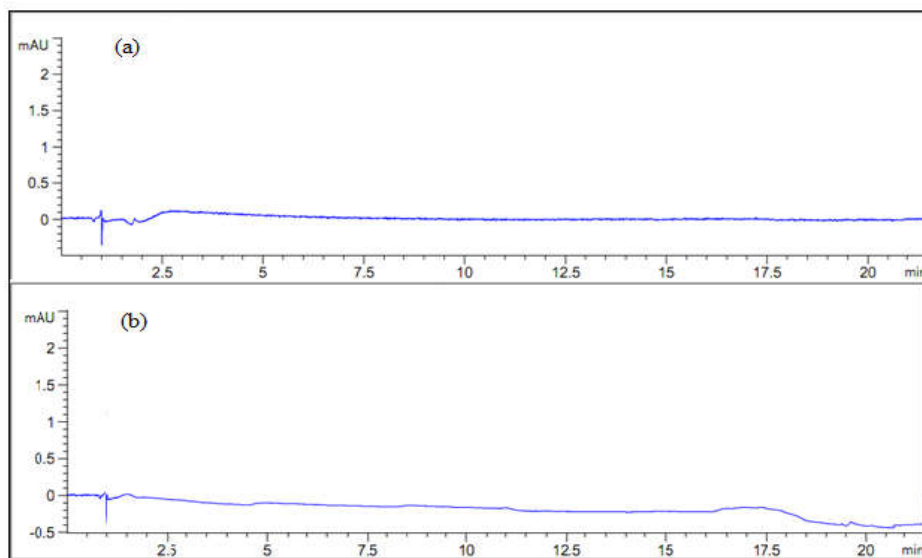


Figure 3. Chromatogram of the blank solvent (a) and placebo solution (b) using the developed method.

### Robustness

The robustness of an analytical procedure refers to its capability to remain unaffected by small, but deliberate variations in method parameters [43] and provides an indication of its reliability during application. Robustness of the developed method was investigated after minor modifications of conditions including changes to the flow rate of the mobile phase, percent of additive (formic acid) in the mobile phase, and detector wavelength for absorption. The results

(Table 5) revealed that the developed method is robust, and the peaks are well separated and elute with acceptable symmetry and resolution.

Table 5. Results of the method robustness tests.

Compounds	Parameters changed for robustness study									
		Flow rate (mL/min)			Wavelength (nm)			% Formic acid		
		0.8	1.0	1.2	248	250	252	0.05	0.1	0.15
Albendazole	Peak symmetry	1.116	0.913	0.879	0.379	0.913	0.927	1.077	0.913	0.919
	% RSD	0.362	1.731	3.267	1.971	1.731	2.962	0.166	1.731	2.146
	Rt (min)	16.03	16.17	15.55	16.07	16.17	16.08	16.18	16.17	16.62
Amoxicillin	Peak symmetry	0.883	0.218	0.911	0.585	0.218	0.47	0.903	0.218	0.837
	% RSD	0.557	1.205	3.566	0.838	1.205	3.077	2.722	1.205	2.939
	Rt (min)	5.344	4.910	4.541	4.823	4.910	4.812	4.584	4.910	3.758
Acetyl salicylic acid	Peak symmetry	1.038	0.995	1.091	1.26	0.995	0.782	0.912	0.995	1.100
	% RSD	4.641	2.778	2.158	1.794	2.778	2.963	3.608	2.778	0.307
	Rt (min)	11.53	11.51	11.11	11.42	11.51	11.50	11.16	11.51	11.12
Caffeine	Peak symmetry	0.960	0.995	0.988	0.988	0.995	0.995	0.611	0.995	1.005
	% RSD	3.057	1.142	4.339	2.050	1.142	0.544	3.629	1.142	2.204
	Rt (min)	7.731	7.417	7.064	7.032	7.417	7.293	7.162	7.417	7.167
Chloroquine	Peak symmetry	1.735	0.676	0.630	1.46	0.676	1.592	0.650	0.676	0.393
	% RSD	3.125	1.430	3.110	2.478	1.430	0.878	0.660	1.430	1.257
	Rt (min)	6.241	5.900	5.623	5.634	5.900	5.476	5.626	5.900	4.940
Ciprofloxacin	Peak symmetry	0.770	0.717	0.866	0.913	0.717	0.908	0.897	0.717	0.630
	% RSD	2.564	1.198	2.894	3.398	1.198	0.676	3.994	1.198	1.684
	Rt (min)	8.308	8.166	7.918	8.008	8.166	8.014	7.700	8.166	7.518
Cloxacillin	Peak symmetry	0.911	0.925	0.912	0.270	0.925	0.968	0.948	0.925	0.856
	% RSD	3.832	1.323	3.909	2.008	1.323	0.785	3.578	1.323	2.096
	Rt (min)	19.278	19.39	18.85	19.03	19.39	18.99	19.23	19.393	19.16
Metformin	Peak symmetry	0.672	0.503	0.515	1.002	0.503	0.999	0.406	0.503	0.721
	% RSD	2.818	3.020	1.961	1.961	3.020	3.030	1.171	3.020	0.969
	Rt (min)	1.635	1.334	1.185	1.333	1.334	1.332	1.348	1.334	1.333
Doxycycline hyclates	Peak symmetry	0.844	0.859	0.851	0.659	0.859	0.740	0.247	0.859	0.846
	% RSD	4.545	3.104	3.040	4.140	3.104	2.433	3.101	3.104	2.674
	Rt (min)	11.76	11.82	11.56	11.52	11.82	11.45	11.78	11.82	11.35
Metronidazole	Peak symmetry	1.019	0.953	1.009	0.771	0.953	1.245	0.948	0.953	1.154
	% RSD	1.742	1.294	0.754	2.286	1.294	3.116	3.838	1.294	0.881
	Rt (min)	13.11	13.19	12.67	13.04	13.19	13.01	12.24	13.19	12.33
Norfloxacin	Peak symmetry	0.780	0.714	0.712	1.037	0.714	1.026	0.671	0.714	0.547
	% RSD	1.890	1.713	4.006	1.389	1.713	1.949	2.163	1.713	0.081
	Rt (min)	8.114	7.960	7.699	7.654	7.960	7.556	7.494	7.960	7.269
Theophylline	Peak symmetry	0.963	0.942	1.003	0.792	0.942	0.783	0.637	0.942	0.952

	% RSD	1.141	1.414	2.710	1.916	1.414	1.068	2.850	1.414	0.816
	Rt (min)	6.616	6.242	5.853	5.934	6.242	6.103	5.950	6.242	5.972
Trimethoprim	Peak symmetry	0.772	0.691	0.701	1.021	0.691	1.047	0.963	0.691	0.499
	% RSD	2.578	1.269	2.277	3.044	1.269	0.544	1.292	1.269	1.263
	Rt (min)	7.348	7.038	6.764	7.010	7.038	7.021	6.751	7.038	6.371

### System suitability

The system suitability test of a chromatographic method is used to verify that the chromatographic system is adequate for application to samples. The parameters considered for this test include retention time, resolution (to the adjacent peak); peak symmetry and number of theoretical plates. These parameters were investigated using the optimized chromatographic conditions. The results (Table 6) reflect good performance and acceptable levels for all the selected analytes.

Table 6. System suitability results determined for the developed chromatographic method.

Pharmaceutical compound	Retention time (min)	Resolution	Peak symmetry	Theoretical plates (N)
Acetyl salicylic acid	11.5	3.7	0.995	341762
Albendazole	16.2	13	0.953	28382
Amoxicillin	4.8	9.0	0.218	18916
Caffeine	7.4	8.5	0.955	212283
Chloroquine	5.9	5.0	0.676	139880
Ciprofloxacin	8.2	47	0.717	262543
Cloxacillin	19.4	-	0.925	2071273
Metformin	1.3	30	0.503	13950
Doxycycline hyclates	11.8	14.5	0.859	311071
Metronidazole	13.2	21	0.953	251295
Norfloxacin	7.6	3.2	0.714	250709
Theophylline	6.2	12.5	0.942	170141
Trimethoprim	7.0	5.8	0.691	174425

## CONCLUSION

A simple, accurate, precise and robust HPLC method has been developed for the determination of thirteen selected pharmaceutical drugs in bulk and marketed tablet dosage form using a single optimized condition. The developed method was validated using ICH guidelines, which proves the reliability of the proposed method. The accuracy of the method was validated by percentage recovery and found to be in the acceptable range. The system suitability parameters were within limit, hence it was concluded that all the systems were suitable to perform further analysis. The development of such an analytical method has many advantages, since different products can be analysed in sequence without changing the instrumental conditions. This is a cost-effective approach for laboratories that lack highly specialized state-of-the-art instrumentation, since it streamlines the laboratory workflow. As new samples come in for quality control, they can be analyzed without any changes to the instrumental conditions.

## ACKNOWLEDGEMENTS

The authors acknowledge the Organization for Women Scientists for Developing World (OWSD Postgraduate Fellowship) and SIDA (Swedish International Development Cooperation Agency) for funding this research and the University of Witwatersrand, Johannesburg, South Africa, for access to their laboratory.

## REFERENCES

1. Bartha, B.; Huber, C.; Schroder, P. Uptake and metabolism of diclofenac in *Typha latifolia* - how plants cope with human pharmaceutical pollution. *Plant Sci.* **2014**, *227*, 12-20.
2. Gumbi, B.P.; Moodley, B.; Birungi, G.; Ndungu, P.G. Detection and quantification of acidic drug residues in South African surface water using gas chromatography-mass spectrometry. *Chemosphere* **2017**, *168*, 1042-1050.
3. Ngumba, E.; Gachanja, A.; Tuhkanen, T. Occurrence of selected antibiotics and antiretroviral drugs in Nairobi River Basin, Kenya. *Sci. Total Environ.* **2016**, *539*, 206-213.
4. Elhag, D.E.; Abdallah, B.S.; Hassan, M.; Suliman, A. ESI-LC/MS method development and validation for the determination of some selected antibiotics in hospital wastewater. *Pharm. Anal. Acta* **2018**, *9*, 1-6.
5. Svetlana, P.K. Quantitative determination of amoxicillin trihydrate in medical forms using kinetic method. *J. Chem. Pharm. Res.* **2014**, *6*, 1120-1125.
6. Varak, M.; Ebrahimi, M. Preconcentration and determination of ciprofloxacin with solid-phase microextraction and silica-coated magnetic nanoparticles modified with salicylic acid by UV-Vis spectrophotometry. *Eurasian J. Anal. Chem.* **2018**, *13*, 1-12.
7. Patel, N.; Contractor, P.; Keshrala, R.; Patel, P.R.; Shridhar, B. Development and validation of a stability-indicating RP-UPLC method for determination of cloxacillin sodium in its bulk form and formulation. *J. Chromatogr. Sci.* **2015**, *53*, 903-908.
8. Abbas, R.F.; Hami, H.K.; Mahdi, N.I. Removal of doxycycline hyclate by adsorption onto cobalt oxide at three different temperatures: Isotherm, thermodynamic and error analysis. *Int. J. Environ. Sci. Technol.* **2018**, 1-8.
9. Zhao, S.; Zhao, H.; Zhu, H.; Li, C.; Lu, X.; Bi, S. Determination of norfloxacin and ciprofloxacin in chicken meat based on matrix solid-phase dispersion extraction and capillary zone electrophoresis. *J. Chem.* **2014**, 1-5.
10. Amin, A.S.; Shahat, M.F.; Edeen, R.E.; Meshref, M.A. Comparison of ion-pairing and reversed phase liquid chromatography in determination of sulfamethoxazole and trimethoprim. *Anal. Lett.* **2008**, *41*, 1878-1894.
11. Elkhoudary, M.M.; Abdel Salam, R.A.; Hadad, G.M. Development and optimization of HPLC analysis of metronidazole, diloxanide, spiramycin and cliquinol in pharmaceutical dosage forms using experimental design. *J. Chromatogr. Sci.* **2016**, *54*, 1701-1712.
12. Yadav, P.; Singh, R. A review on anthelmintic drugs and their future scope. *Int. J. Pharm. Pharm. Sci.* **2011**, *3*, 17-21.
13. Sowjanya, S.; Devadasu, C. Development of RP-HPLC method for the simultaneous quantitation of levamisole and albendazole: Application to assay validation. *Int. J. Anal. Chem.* **2018**, 1-10.
14. Qarah A.S.N.; Basavaiah, K.; Swamy, N. Sensitive and selective extraction-free spectrophotometric assay of chloroquine phosphate in pharmaceuticals based on ion-pair reaction with bromocresol green and bromocresol purple. *Pharm. Anal. Acta* **2017**, *8*, 1-9.

15. de Aguiar, J.L.N.; Leandro, K.C.; Abrantes, S.M.P.; Albert, A.L.M. Development of a new analytical method for determination of acetylsalicylic and salicylic acids in tablets by reversed phase liquid chromatography. *Braz. J. Pharm. Sci.* **2009**, *45*, 723-727.
16. Hobl, E.; Jilma, B.; Ebner, J.; Schmid, R.W. Simultaneous determination of acetylsalicylic acid and salicylic acid in human plasma by isocratic high-pressure liquid chromatography with post-column hydrolysis and fluorescence detection. *Biomed. Chromatogr.* **2012**, *27*, 695-698.
17. Chowdhury, S.R.; Maleque, M.; Shihan, M.H. Development and validation of a simple RP-HPLC method for determination of caffeine in pharmaceutical dosage forms. *Asian J. Pharm. Anal.* **2012**, *2*, 1-4.
18. Sayeed, M.A.; Habib, R.; Rahman, M.; Banna, H.A.; Rana, S. In vitro study on the interaction of ketotifen fumarate with anhydrous theophylline. *Braz. J. Pharm. Sci.* **2012**, *48*, 211-216.
19. Silpavathi, L.; Das, M.K. A Non-aqueous titrimetry and UV spectrophotometric study of metformin hydrochloride marketed tablets. *J. Chem. Pharm. Sci.* **2015**, *8*, 128-130.
20. Bendz, D.; Paxeus, N.A.; Ginn, T.R.; Loge, F.J. Occurrence and fate of pharmaceutically active compounds in the environment, a case study: Hoje River in Sweden. *J. Hazard. Mater.* **2005**, *122*, 195-204.
21. Iglesias, A.; Nebot, C.; Vázquez, B.; Coronel-Olivares, C.; Abuín, F.; Cepeda, A. Monitoring the presence of 13 active compounds in surface water collected from rural areas in Northwestern Spain. *Int. J. Environ. Res. Public Health* **2014**, *11*, 5251-5272.
22. Sarode, S.K.; Pise, S.T.; Dhore, P.; Mundhada, D.R.; Bhaskaran, S. Development of analytical method for simultaneous estimation of amoxicillin and carbocisteine in solid dosage form by RP-HPLC. *BioMedRx.* **2013**, *1*, 360-362.
23. Ahmed, D.A.; Abdel-Aziz, O.; Abdel-Ghany, M.; Weshahy, S.A. Stability indicating determination of Albendazole in bulk drug and pharmaceutical dosage form by chromatographic and spectrophotometric methods. *Future J. Pharm. Sci.* **2018**, *4*, 161-165.
24. Miranda, T.A.; Silva, P.H.; Pianetti, G.A.; Cesar, I.C. Simultaneous quantitation of chloroquine and primaquine by UPLC-DAD and comparison with a HPLC-DAD method. *Malar. J.* **2015**, *14*, 1-7.
25. Radi, M.; Ramli, Y.; Karbane, M.E.; Marzak, S.; Bougrin, K. Validation of a method for simultaneous determination of acetaminophen and caffeine by HPLC in different pharmaceutical forms: Tablet, capsule and sachet. *J. Mater. Environ. Sci.* **2016**, *7*, 4608-4613.
26. Umaphathi, P.; Ayyappan, J.; Quine, S.D. Quantitative determination of metformin hydrochloride in tablet formulation containing croscarmellose sodium as disintegrant by HPLC and UV-spectrophotometry. *Trop. J. Pharm. Res.* **2012**, *11*, 107-116.
27. Kanakal, M.M.; Majid, A.S.A.; Sattar, M.Z.A.; Ajmi, N.S.; Majid, A.S.A. Buffer-free high performance liquid chromatography method for the determination of theophylline in pharmaceutical dosage forms. *Trop. J. Pharm. Res.* **2014**, *13*, 149-153.
28. Gezahegn, T.; Tegegne, B.; Zewge, F.; Chandravanshi, B.S. Salting-out assisted liquid-liquid extraction for the determination of ciprofloxacin residues in water samples by high performance liquid chromatography-diode array detector. *BMC Chem.* **2019**, *13*, 1-10.
29. Naguib, I.A.; Abdelaleem, E.A.; Zaazaa, H.E.; Hussein, E.A.; Alsalahat, I. Development and validation of spectrophotometric methods for the determination of amoxicillin trihydrate and dicloxacillin sodium in their binary mixture. *Anal. Chem. Lett.* **2018**, *8*, 844-861.
30. Shailesh, J.W.; Shailesh; L.P.; Shivraj, S.S.; Supriya S.K.; Sima, S.L.; Puranik, P.M. Stability indicating assay methods for simultaneous estimation of amoxicillin trihydrate and cloxacillin sodium in combined capsule dosage form by UV-spectrophotometric method. *J. Biomed. Pharm. Sci.* **2017**, *4*, 858-864.

31. Palamy, S.; Ruengsitagoon, W. Reverse flow injection spectrophotometric determination of ciprofloxacin in pharmaceuticals using iron from soil as a green reagent. *Spectrochim. Acta A Mol. Biomol. Spectrosc.* **2018**, *190*, 129-134.
32. Adegoke, O.A.; Babalola, C.P.; Kotila, O.A.; Obuebhor, O. Simultaneous spectrophotometric determination of trimethoprim and sulphamethoxazole following charge-transfer complexation with chloranilic acid. *Arab. J. Chem.* **2017**, *10*, 3848-3860.
33. Kanakapura, B.; Penmatsa, V.K.; Umakanthappa, C. Simple and selective spectrophotometric assay of chloroquine in pharmaceuticals using two nitrophenols as chromogenic agents. *J. Pharm. Biol. Sci.* **2016**, *11*, 29-40.
34. Ashour, S.; Kabbani, R.; Direct spectrophotometric determination of metformin hydrochloride in pure form and in drug formulations. *Anal. Lett.* **2003**, *36*, 361-370.
35. Yilmaz, S.; Baltaoglu, E.; Saglikoglu, G.; Yagmur, S.; Polat, K.; Sadikoglu, M. Electroanalytical determination of metronidazole in tablet dosage form. *J. Serbian Chem. Soc.* **2013**, *78*, 295-302.
36. Mekassa, B.; Tessema, M.; Chandravanshi, B.S. Simultaneous determination of caffeine and theophylline using square wave voltammetry at poly(L-aspartic acid)/functionalized multi-walled carbon nanotubes composite modified electrode. *Sens. Bio-Sensing Res.* **2017**, *16*, 46-54.
37. de Macedo, I.Y.L.; Garcia, L.F.; de Souza, A.R.; da Silva, A.M.L. Differential pulse voltammetric determination of albendazole and mebendazole in pharmaceutical formulations based on modified sonogel carbon paste electrodes with perovskite-type LaFeO<sub>3</sub> nanoparticles. *Int. J. Electrochem. Sci.* **2016**, *163*, 428-434.
38. Cofan, C.; Radovan, C. Anodic determination of acetylsalicylic acid at a mildly oxidized boron-doped diamond electrode in sodium sulphate medium. *Int. J. Electrochem. Sci.* **2011**, *1*-9.
39. Shao, X.; Liu, H.; Gao, X.; Chen, W.; Song, Z. Determination of norfloxacin in pharmaceuticals, human serum, and urine using a luminol-dissolved oxygen chemiluminescence system. *Chem. Papers* **2007**, *61*, 353-358.
40. ICH, Q.R. The international council for harmonisation of technical requirements for pharmaceuticals for human use (ICH). Text and methodology Q2(R1). Geneva, Switzerland IFPMA, **2005**.
41. Sutariya, V.; Wehrung, D.; Geldenhuys, W.J. Development and validation of a novel RP-HPLC method for the analysis of reduced glutathione. *J. Chromatogr. Sci.* **2012**, *50*, 271-276.
42. UNODC. Guidance for the Validation of Analytical Methodology and Calibration of Equipment used for Testing of Illicit Drugs in Seized Materials and Biological Specimens, United Nation New York, **2009**, 1-67. <https://www.unodc.org/documents/scientific/validation.pdf> (18 January 2021).
43. Shah, P.; Pandya, T.; Gohel, M.; Thakkar, V. Development and validation of HPLC method for simultaneous estimation of rifampicin and ofloxacin using experimental design. *J. Taibah Univ. Sci.* **2018**, *13*, 146-154.