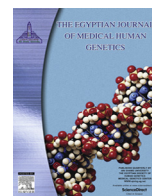


HOSTED BY



Contents lists available at ScienceDirect

# The Egyptian Journal of Medical Human Genetics

journal homepage: [www.sciencedirect.com](http://www.sciencedirect.com)

Original article

## Correlation between cognitive function, gross motor skills and health – Related quality of life in children with Down syndrome



Saly Said Abd El-Hady\*, Faten Hassan Abd El-Azim, Hoda Abd El-Aziem Mohamed El-Talawy

Department of Physical Therapy for Paediatrics, Faculty of Physical Therapy, Cairo University, Egypt

### ARTICLE INFO

#### Article history:

Received 19 June 2017

Accepted 6 July 2017

Available online 13 July 2017

#### Keywords:

Cognitive function

Gross motor skills

Health – related quality of life

Down syndrome children

### ABSTRACT

**Background:** Children with Down syndrome (DS) have delayed motor and cognitive development and have problems in health related quality of life (HRQOL).

**Purpose:** To evaluate the correlation between cognitive function; attention/concentration, gross motor skills; standing and walking, running, jumping domains and HRQOL in children with DS.

**Subjects and methods:** Seventy children with DS of both sexes (37 boys and 33 girls) were selected from El Tarbia El Fekria School for children with Special Needs and Education and National Institute of neuro motor system. They were selected to be ranged in age from 8 to 12 years and to be free from visual, hearing or perceptual problems. They were divided into two age groups; group A (8–10 years), and group B (10–12 years). The RehaCom was used to evaluate the cognitive function (attention/concentration), the Gross Motor Function Measure-88 (GMFM-88) was used to evaluate the gross motor skills and the Pediatric quality of life inventory parent-proxy report (PedsQL TM) was used to evaluate the HRQOL.

**Results:** There was a weak to moderate correlation between the cognitive function, GMFM and HRQOL in both age groups. The level of difficulty of attention/concentration was moderate, positively and significantly correlated with GMFM; standing and walking, running, jumping domains in both age groups. There was a moderate, positive and significant correlation was found between the physical score of HRQOL and walking, running, jumping domain in age group B and between the psychosocial score of HRQOL and standing domain in age group A.

**Conclusion:** The cognitive function and HRQOL should be considered in the evaluation of children with DS in addition to gross motor skills as there was a correlation between the cognitive function, HRQOL and GMFM.

© 2017 Ain Shams University. Production and hosting by Elsevier B.V. This is an open access article under the CC BY-NC-ND license (<http://creativecommons.org/licenses/by-nc-nd/4.0/>).

## 1. Introduction

Down syndrome (DS) or trisomy 21 is the most common genetic cause of intellectual disability. It occurs in an estimated 9.0–11.8 per 10,000 live births in Europe. The syndrome is caused by an extra copy of chromosome 21 which is represented as trisomy or part of a third copy of chromosome 21 that is called translocations [1]. Children with DS have various problems, such as delays in gross motor skill development, cognitive limitations, neurological disorders, sensorimotor integration impairments, obesity, psychosocial functioning and health impairments, delays in speech and language skill development [2,3].

Cognition is the ability of the child to acquire, organize and use knowledge. It is a general term involving multiple classes of mental

capacities. DS is characterized by disorders in various cognitive abilities, including impairment in attention and concentration, learning, memory and language that can result in mild to profound disorders in overall intellectual functioning. Cognitive delay in addition to delayed motor skills may further limit the child's ability to interact with the environment, explore the space and manipulate objects. The cognitive limitations of individuals with DS have an important influence on the level of functioning attained. Cognitive deficit is considered one of the major problems affecting activities of daily living in children with DS [4].

Children with DS have problems in attention which is a major component of cognitive function. Attention is the basis on which all the cognitive functions are built. Attention and concentration restrict various motor tasks. So, the use of cognitive assessment has an important value in children with DS [5,6]. Cognitive assessment is a performance based assessment of various cognitive skills. It helps to identify children's strength and difficulties in intellectual development and lead to intervention that optimizes that

Peer review under responsibility of Ain Shams University.

\* Corresponding author.

E-mail address: [Saly.said@yahoo.com](mailto:Saly.said@yahoo.com) (S.S. Abd El-Hady).

<http://dx.doi.org/10.1016/j.ejmhg.2017.07.006>

1110-8630/© 2017 Ain Shams University. Production and hosting by Elsevier B.V.

This is an open access article under the CC BY-NC-ND license (<http://creativecommons.org/licenses/by-nc-nd/4.0/>).

development. Assessment of children's cognitive abilities constitutes a major part in the field of physical therapy due to its importance in gathering information for diagnosis of behavioral problems in children [7,8].

Down syndrome affects physical, cognitive, sensory and adaptive functions during the developmental process. These disabilities cause limitations in activities and participation in adolescence and adulthood and affect health related quality of life (HRQOL) and wellbeing in negative ways [9]. Children with DS usually suffer from overall muscle weakness, slow postural reactions, and response time, in addition to hyper flexible joints that interfere with the child's daily activities and result in lower quality of life. Most studies emphasize primary motor and sensory impairment and fail to address functional outcomes [10,11].

The concept of HRQOL is the assessment of the state of the individuals in terms of their own value system and culture. It is reported that HRQOL is affected by chronic and frequent conditions such as mental retardation. Social participation and HRQOL are emerging areas of research, as they are essential for children with physical dysfunction to enjoy leisure activities at home and in the community [12]. Therefore, the aim of the present study is to investigate the correlation between cognitive function; attention/concentrations, gross motor skills; standing and walking, running, jumping domains and HRQOL in children with DS.

## 2. Subjects and methods

### 2.1. Patients

A group of 70 children with DS from both sexes (37 boys and 33 girls), their ages ranged from 8 to 12 years. They were selected from El Tarbia El Fekria School for children with Special Needs and Education in Dokki, Giza and National Institute of neuro motor system, Giza, Egypt. Children were classified into two age groups; (A) from 8 to 10 years with a mean age  $8.72 \pm 0.82$  years, and (B) from 10 to 12 years with a mean age  $11.6 \pm 0.55$  years. They were selected according to the following criteria: they are able to walk independently, their IQ level ranges from 50 to 70 and they are able to understand and follow instructions given during assessment. Exclusion criteria included children who have some musculoskeletal problems that restricted the interaction with the Rehacom, sever visual, hearing or perceptual problems that interfere with the task performance.

### 2.2. Rehacom system

Rehacom system, version 5 was used to assess cognitive function which is a software computer – assisted therapy system. It is composed of special input panel, computer keyboard, mouse and central processing unit (CPU). In the current study, we assessed the attention and concentration in which the child selects from many pictures the one that is identical with a pattern. The program is composed of 24 ascending difficulty levels. There were eight stages, each starting with a low similarity of the objects (easy task) up to high resemblance (hard task). Each stage consisted of three levels of difficulty with the matrix containing three, six or nine pictures [13]. The environment is a closed one with the least possible distraction, suitable light and temperature. The child sat in a comfortable sitting position in front of the screen. The child's mother attended the evaluation session to enhance the child cooperation. Each child was given explanatory instructions before the evaluation. The authors described to the child every task and allow him to practice the task to ensure his understanding of the testing procedures.

### 2.3. Gross motor function measure-88 (GMFM-88)

Gross motor skills; standing and walking running, jumping domains were assessed using GMFM-88. It has been validated for use with children who have DS. The GMFM-88 is a reliable scale to evaluate gross motor function in a quantitative manner regardless the quality of motor performance. It can be used for children from birth to 16 years of age. In the present study, each child was assessed in standing (13 items) and walking, running, jumping domains (24 items) as reflection of some activities of daily living. The evaluation environment should be suitable, comfortable, closed warm for the child and the floor should have a smooth, firm surface, large enough to hold necessary equipment and allows the child to move freely. The items of the GMFM are measured by observation of the child and scored on a 4 – point ordinal scale (0 = does not initiate, 1 = initiate, 2 = partially completes, 3 = completes activity. Determine the goal total score, only the dimensions identified as goal areas by the clinician were included [14].

### 2.4. Pediatric quality of life inventory (PedsQL™)

Health-related Quality of life for children with DS was assessed using The PedsQL™ parent-proxy report Generic Core Scale [29]. We used the parent proxy study as the children with DS could not fill out the inventory by themselves due to their cognitive impairment. It is a brief, 23-item multidimensional instrument designed for measuring pediatric HRQOL in chronic health conditions and healthy children. It consists of four generic core scales which are physical functioning (8 items), emotional functioning (5 items), social functioning (5 items) and school functioning (5 items). The PedsQL™ has been shown to be both reliable and valid with internal consistency reliability coefficients. The 3 summary scores include total scale score (all subscales), physical health summary score (physical functioning scale only), and psychosocial health summary (emotional, social, and school functioning scales combined). Items are rated on a 5-point ordinary scale to indicate how much the child has problems with various areas of functioning, ranging from 0 (never a problem) 1 (almost never a problem), 2 (if it is sometimes a problem), 3 (often a problem) to 4 (almost always a problem). The 5-point scale (0–5) is transformed to a 0–100 scale as follows: 0 = 100, 1 = 75, 2 = 50, 3 = 25, and 4 = 0, so that the higher scores indicate better HRQOL [15].

### 2.5. Statistical analysis

All statistical measures were performed through the statistical package for social studies (SPSS) version 19 for windows. The level of significance for all statistical tests was set at  $p < 0.05$ . Person Correlation Coefficient was conducted to determine the correlation between cognitive items; minimum and maximum reaction time and GMFM; standing and walking, running, jumping domains and HRQOL; physical, psychosocial and total scores. Spearman Correlation Coefficient was conducted to determine the correlation between cognitive item; difficulty level and HRQOL and GMFM.

## 3. Results

### 3.1. Clinical characteristics of the study participants

Group A (8–10 years) includes 35 children with DS (15 girls and 20 boys), with a mean age  $8.72 \pm 0.82$  years. Group B (10–12 years) includes 35 children with DS (17 girls and 18 boys) with a mean age  $11.6 \pm 0.55$  years. There was no statistically significant difference in the mean age value between boys and girls with  $p$  value = 0.81.

**Table 1**

Correlation between cognitive function and Gross Motor Function Measure (GMFM) in both age groups.

Cognitive function	GMFM	Age group A (8–10 y)			Age group B (10–12 y)		
		r value	p value	Sig	r value	p value	Sig
Minimum reaction time (ms)	GMFM standing	0.24	0.16	NS	–0.13	0.45	NS
	GMFM Walking running, jumping	0.06	0.72	NS	–0.08	0.62	NS
	GMFM goal total score	0.16	0.35	NS	–0.11	0.49	NS
Maximum reaction time (ms)	GMFM standing	–0.32	0.055	NS	0.09	0.59	NS
	GMFM Walking running, jumping	–0.02	0.88	NS	0.26	0.12	NS
	GMFM goal total score	–0.19	0.25	NS	0.18	0.28	NS
		$r_s$ value	p value	Sig	$r_s$ value	p value	Sig
Difficulty level	GMFM standing	0.3	0.07	NS	0.47	0.004	S
	GMFM Walking running, jumping	0.43	0.01	S	0.34	0.04	S
	GMFM goal total score	0.44	0.007	S	0.42	0.01	S

r value: Pearson correlation coefficient.

 $r_s$  value: Spearman correlation coefficient.

NS: No significant.

S: Significance.

p value: Probability value.

### 3.2. The relationship between cognitive function and gross motor function measure in both age groups

There was a weak correlation between cognitive function in minimum and maximum reaction time and GMFM; standing, walking, running, jumping domains and goal total score in both age groups. However, there was a weak correlation between the difficulty level of cognitive function and GMFM; standing domain in age group A and a moderate correlation in age group B. In the present study, a moderate correlation was found between the difficulty level of cognitive function and GMFM; walking, running, jumping domain and goal total score in both age groups (Table 1).

### 3.3. The relationship between cognitive function and health-related quality of life in both age groups

There was a weak correlation between cognitive function in the minimum reaction time, maximum reaction time and difficulty level and the HRQOL; physical score, psychosocial score and total score in both age groups (Table 2).

### 3.4. The relationship between health-related quality of life and gross motor function measure in both age groups

In the current study, there was a weak correlation between the physical score and GMFM; standing domain in both age groups. A weak correlation was found between the physical score and

GMFM; walking, running, jumping in age group A, while a moderate correlation was found in age group B. In addition, there was a weak correlation between the physical score and GMFM goal total score in both age groups.

In our study, we found that a moderate correlation was found between the psychosocial score and GMFM; standing domain in age group A, while a weak correlation was found in age group B. Moreover, there was a weak correlation between the psychosocial score and GMFM; walking, running, jumping in both age groups.

The current results indicated that there was a weak correlations between the psychosocial score and GMFM goal total score, and between HRQOL total score and GMFM; standing, walking, running, jumping and goal total score in both age groups (Table 3).

## 4. Discussion

The purpose of this study is to determine the correlation between the cognitive function, gross motor skills and HRQOL in children with DS, to provide a valuable information for all involved in the care of children with DS as family, physical therapist, health care and educational professionals.

To our knowledge, no much available studies were carried out this correlation in children with DS. In the current study, there was a weak to moderate correlation between the cognitive function and the two domains of gross motor skills. Our results come in agreement with Malak et al. [16] who found that there was a weak relation between the motor and cognitive development in

**Table 2**

Correlation between cognitive function and Health –related quality of life (HRQOL) in both age groups.

Cognitive function	HRQOL	Age group A (8–10 y)			Age group B (10–12 y)		
		r value	p value	Sig	r value	p value	Sig
Minimum reaction time (ms)	Physical score	–0.13	0.44	NS	–0.28	0.09	NS
	Psychosocial score	0.08	0.62	NS	–0.11	0.51	NS
	Total score	–0.04	0.81	NS	–0.22	0.19	NS
Maximum reaction time (ms)	Physical score	–0.02	0.88	NS	–0.13	0.43	NS
	Psychosocial score	–0.12	0.46	NS	–0.13	0.43	NS
	Total score	–0.09	0.6	NS	–0.15	0.38	NS
		$r_s$ value	p value	Sig	$r_s$ value	p value	Sig
Difficulty level	Physical score	–0.001	0.99	NS	–0.04	0.79	NS
	Psychosocial score	0.25	0.14	NS	–0.004	0.98	NS
	Total score	0.13	0.43	NS	–0.007	0.96	NS

r value: Pearson correlation coefficient.

p value: Probability value.

 $r_s$  value: Spearman correlation coefficient.

NS: No significant.

**Table 3**  
Correlation between Health – related quality of life (HRQOL) and Gross Motor Function Measure (GMFM) in both age groups.

HRQOL	GMFM	Age group A (8–10 y)			Age group B (10–12 y)		
		r value	p value	Sig	r value	p value	Sig
Physical score	GMFM standing	0.13	0.43	NS	0.2	0.24	NS
	GMFM Walking running, jumping	0.21	0.22	NS	0.34	0.04	S
	GMFM goal total score	0.19	0.25	NS	0.29	0.08	NS
Psychosocial score	GMFM standing	0.38	0.02	S	0.01	0.94	NS
	GMFM Walking running, jumping	0.02	0.88	NS	−0.007	0.96	NS
	GMFM goal total score	0.22	0.19	NS	0.005	0.97	NS
Total score	GMFM standing	0.31	0.06	NS	0.12	0.49	NS
	GMFM Walking running, jumping	0.15	0.36	NS	0.19	0.27	NS
	GMFM goal total score	0.26	0.12	NS	0.17	0.32	NS

r value: Pearson correlation coefficient.

p value: Probability value.

S: Significant.

NS: No significant.

children with DS with age older than six years. The current result is supported by Pangalos et al. [17] who demonstrated that there was a relation between cognitive function, motor skills and social participation in children with DS. They explained that the delay in motor development may cause delay in other areas of the development.

Volman et al. [18] agree with the present result who suggested that there was a weak relation between the mental ability and motor skills in children with DS. They explained this weak relation to the influence of other factors on motor skills, as communication, daily living skills, socialization, family environment, and the mother-child interaction.

In contrast, Kokubun et al. [19] claimed that no correlation was found between the walking skills and the cognitive ability in children with mental retardation at the age of seven years or older. The discrepancy with their results may be due to small sample size in this study. The current result contradicted with Fidler et al. [20] who argued that there was a highly correlation between the gross motor domains and the mental function in children with DS. The differences with their results may be due to the differences in the sample age and the measures used.

The current results are in agreement with the results obtained by other studies which found that there was a weak and positive relation between motor performance and executive function in the children with DS aged between 7 and 11 years old [21,22]. In addition, Almeida et al. and Jobling [23,24] reported that there was a close relationship between the mental and motor functions in children with DS.

The association between the mental and motor function could be explained by several potential explanations; first, the nervous system and the brain functions play a central role in the motor and cognitive development in the same way; second, the role of the cerebellum and a similar developmental timetable with an accelerated development between five and ten years of age for both domains [25,26].

In our study, we found that there was a weak relation between the cognitive function and HRQOL in children with DS. These results are in accordance with those reported by Rihtman et al. [27] who represented that there was a correlation between the cognitive function and the communication and socialization in children with DS. Haley et al. [28] is in agreement with our findings who demonstrated that there was a correlation between the social function and the cognitive abilities in children with disabilities. The current study is supported by Leonardi [29] who suggested that a correlation was found between the mental ability and HRQOL in children with a limited mental capacity.

In contrast, Loveland and Kelley [30] demonstrated that there was a strong relationship between the mental function and the

socialization and communication in children with DS. The discrepancy with their results may be due to small sample size in this study.

In the current study, a weak to moderate correlation was found between the two domains of gross motor skills and HRQOL in children with DS. Our results come in agreement with Rihtman et al. [27] who reported that there was a moderate correlation between the motor function in children with DS and their participation in the community. Volman et al. [18] supported the current results who found that the gross motor skills were associated with self-care activities in children with DS. In addition, Khetani et al. [31] demonstrated that the functional abilities as mobility were associated with the participation in preschool-aged children of developmental delay.

## 5. Conclusion

The current results implied that the children with DS are not only impaired in gross motor skills and cognitive function, but also have deficits in HRQOL, and stressed on the importance of the early evaluation of cognitive function and HRQOL in addition to gross motor skills in children with DS, as there was a weak to moderate correlation between them. Additional studies with larger sample sizes will be necessary to confirm our findings.

## Funding resources

None

## Conflict of interest

The authors declare that there is no conflict of interest. There is neither financial nor personal relationship with other people or organizations that can inappropriately influence this work.

## Acknowledgement

The authors would like to thank the children who participated in the study and their parents.

## References

- [1] Loane M, Morris JK, Addor MC, Arriola L, Budd J, Doray B. Twenty-year trends in the prevalence of Down syndrome and other trisomies in Europe: impact of maternal age and prenatal screening. *Eur J Hum Genet* 2013;21:27–33. doi: <http://dx.doi.org/10.1038/ejhg>.
- [2] Kent RD, Vorperian HK. Speech impairment in Down syndrome: a review. *J Speech Lang Hear Res* 2013;56:178–210.

- [3] Pitetti K, Baynard T, Agiovlasis S. Children and adolescents with Down syndrome, physical fitness and physical activity. *J Sport Health Sci* 2013;2:47–57.
- [4] Lott IT, Dierssen M. Cognitive deficits and associated neurological complications in individuals with Down' syndrome. *Lancet Neurol* 2010;9:623–33.
- [5] Galante M, Jani H, Vanes L, Daniel H, Fisher EMC, Tybulewicz VLJ, et al. Impairment in motor coordination without major changes in cerebellar plasticity in the Tc1 model of Down syndrome. *Hum Mol Genet* 2009;18:1449–63.
- [6] Schneck CM. Visual perception. In: Smith JC, editor. *Occupational Therapy for Children*. Louis, USA: Mosoby, Inc., A Harcourt Health Science Company; 2005. p. 385–408.
- [7] Silver CH, Blackburn LB, Arffa S, Barth JT, Bush SS, Koffler SP. The importance of neuropsychological assessment for the evaluation of childhood learning disorders. NAN policy and planning committee. *Arch Clin Neuropsychol* 2006;21:741–4.
- [8] Sanders SVG. Cognitive assessment. In: Brassard MR, Boehm AE, editors. *Preschool Assessment Principles and Practices*. Guilford Press; 2011. p. 383–419.
- [9] Hetherington R, Dennis M, Barnes M, Drake J, Gentili F. Functional outcome in young adults with spina bifida and hydrocephalus. *Child Nerv Syst* 2006;22(117–24):2.
- [10] Martin GE, Klusek J, Estigarrria B, Roberts J E. Language characteristics of individuals with Down syndrome. *Top Lang Disord* 2009;29:112–32.
- [11] Adamson LB, Bakeman R, Deckner DF, Ronski MA. Joint engagement and the emergence of language in children with Autism and Down syndrome. *J Autism Dev Disord* 2009;39:84–96.
- [12] Danckaerts M, Sonuga-Barke EJ, Banaschewski T, Buitelaar J, Döpfner M, Hollis C, et al. The quality of life of children with attention deficit/hyperactivity disorder: a systematic review. *Eur Child Adolesc Psychiatry* 2010;19:83–105.
- [13] Schuhfried G. *RehaCom Version 5. Basic Manual* [Internet]. Magdeburg (DE): Hasomed; 2003. Available from: <[http://www.hasomed.de/fileadmin/user\\_upload/Rehacom/Manuale/ENG/RehaComEN.pdf](http://www.hasomed.de/fileadmin/user_upload/Rehacom/Manuale/ENG/RehaComEN.pdf)>.
- [14] Russell D, Rosenbaum P, Gowland C, Hardy S, Lane M, Plews N, et al. *Gross Motor Function Measure Manual*. 2nd ed. Hamilton: McMaster University; 2002.
- [15] Varni JW, Limbers CA, Burwinkle TM. Parent proxy-report of their children's health-related quality of life: an analysis of 13,878 parents' reliability and validity across age subgroups using the PedsQL 4.0 Generic Core Scales. *Health Qual Life Outcomes* 2007;5:2.
- [16] Malak R, Kotwicka M, Krawczyk-Wasielewska A, Mojs E, Samborski W. Motor skills, cognitive development and balance functions of children with Down syndrome. *Ann Agric Environ Med* 2013;20:803–6.
- [17] Pangalos C, Avramopoulos D, Blouin J, Raoul O, deBlois MC, Prieur M, et al. Understanding the mechanism(s) of mosaic trisomy 21 by using DNA polymorphism analysis. *Am J Hum Genet* 1994;54:473–81.
- [18] Volman MJ, Visser JJ, Lensvelt-Mulders GJ. Functional status in 5- to 7-year-old children with Down syndrome in relation to motor ability and performance mental ability. *Disabil Rehabil* 2007;29:25–31.
- [19] Fidler DJ, Hepburn SL, Mankin G, Rogers SJ. Praxis skills in young children with Down syndrome, other developmental disabilities, and typically developing children. *Am J Occup Ther* 2005;59:129–38.
- [20] Kokubun M, Haishi K, Okuzumi H, Hosobuchi T. Factors affecting age of walking by children with mental retardation. *Perceptual Motor Skills*. 1995; 80:547–52.
- [21] Schott N, Holfelder B. Relationship between motor skill competency and executive function in children with Down's syndrome. *J Intell Disabil Res* 2015;59:860–72.
- [22] Wassenberg R, Feron FJM, Kessels AGH, Hendriksen JGM, Kalff AC, Kroes M. Relation between cognitive and motor performance in 5- to 6-year-old children: results from a large-scale cross-sectional study. *Child Dev* 2005;76:1092–103.
- [23] Almeida G, Marconi N, Tortoza C, Ferreira S, Gottlieb G, Corcos D. Sensorimotor deficits in Down syndrome: implications for facilitating motor performance, Perceptual-motor behavior in Down syndrome: 2000:151–74.
- [24] Jobling A. Attainment of motor proficiency in school-aged children with Down syndrome. *Adapt Phys Activ Q* 1999;16:344–61.
- [25] Sacks B, Buckley S, Trust D. Motor development for individuals with down syndrome: an overview: the Down syndrome educational trust. *Down syndrome Issues and Information* 2003; doi:10.3104/9781903806173.
- [26] Westendorp M, Hartman E, Houwen S, Smith J, Visscher C. The relationship between gross motor skills and academic achievement in children with learning disabilities. *Res Dev Disabil* 2011;32:2773–9.
- [27] Rihtman T, Tekuzener E, Parush S, Tenenbaum A, Bachrach SJ, Ornoy A. Are the cognitive functions of children with Down syndrome related to their participation? *Dev Med Child Neurol* 2010;52:72–8.
- [28] Haley SM, Coster WJ, Ludlow LH, Haltiwanger JT, Andrellos PJ. *Pediatric evaluation of disability inventory (PEDI)*. Boston: New England Medical Centre Hospitals; 1992.
- [29] Leonardi M, Bickembach J, Ustun TB, Chatterji S. The definition of disability: what is in a name? *Lancet* 2006;368:1219–21.
- [30] Loveland KA, Kelley ML. Development of adaptive behavior in preschoolers with autism or Down syndrome. *Am J Ment Retard* 1991;96:13–20.
- [31] Khetani M, Graham JE, Alvord C. Community participation patterns among preschool-aged children who have received part C early intervention services. *Child Care Health Dev* 2013;39:490–9.